



LAMBTON JAMB SERIES

INSTALLATION INSTRUCTIONS

45/60/90 MINUTE CERTIFIED WOOD JAMBS

IMPORTANT NOTICE

**WARRANTY WILL BE HONORED ONLY IF THE JAMBS HAVE BEEN INSTALLED
IN ACCORDANCE TO THESE INSTALLATION INSTRUCTIONS**

INFORMATIONS GÉNÉRALES

Note

- Wood wedges may be used in the installation procedures. Therefore, only the term "wedge" will be mentioned.
- Any type of non flammable silicone caulking or quick setting compound may be used where caulking is mentioned (see figure #4-①).
- You may install any solid wood or veneer covered M.D.F. no smaller than 1/2" thick by 2" wide as a casing.
- To avoid damaging your jamb, all screw holes should be pre-drilled for #8 screws using a 3/32" drill bit. Holes which are from 65–70% of the diameter of the screw are best.

Wall requirements

- Walls framed with wood or metal studs or masonry construction.
- Framing: wood of a nominal dimension of 2" x 4" or a steel frame (25 ga.) of at least 2-1/2".
- Minimum thickness: 5".
- Unfinished opening for a certified jamb:
 - 3" ($\pm 1"$) larger than the net opening of the door.
 - 1-1/2" ($\pm 1/2"$) higher than the net opening of the door.

Note

- All dimensions are rough dimensions of the components.
- For masonry walls, a minimum 2" x 3" frame should be fixed to the wall using expanding masonry anchors of at least 3/8" with a maximum of 26" center to center.

PREPARATION OF THE ROUGH OPENING

Steel plates 2" wide by 12" long (20 ga.) are needed but not included. These will be used as supplementary anchoring for the hinges and the strike on the jamb uprights and header if required. The plates should be centered on the height of each hinge as well as the strike with at least 1" exceeding past each extremity. Attach each plate to the rough framing with 3 suitable anchors spaced about 5" apart: use #6 screws 3/8" long for steel frames; for wood frames, use 1" long drywall screws. See figure #1.

Figure #1 Attach metal plates to the rough framing

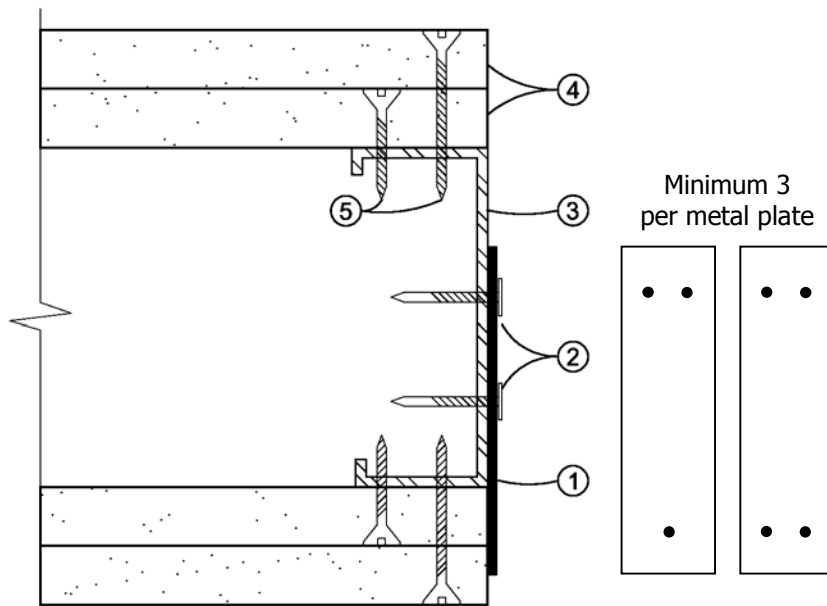
① 1 metal plate
2" x 12" (20 ga.)
per hinge
and strike

② #6 screws,
3/8" long,
minimum 3
per metal plate
(for wood,
use 1" long
drywall screws)

③ 2-1/2" metal
framing (25 ga.)

④ 5/8"
drywall panels

⑤ Drywall screws



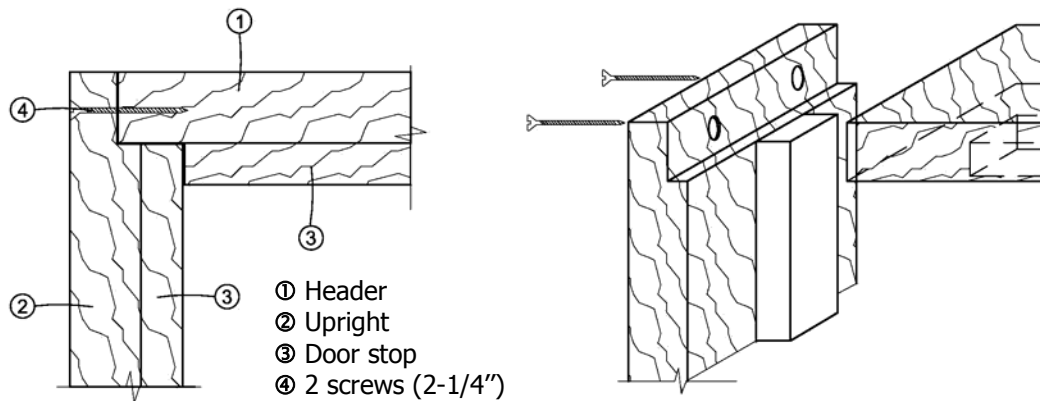
Metal frame illustrated

If needed, you may remove up to 3/4" from the base of each jamb upright during the installation of the jamb in the opening. Be sure that you do not have to reduce or remove any material from the bottom of the door itself. Some doors may not be trimmed from the bottom.

JAMB ASSEMBLY

Line up the header with the jamb uprights. Insert 2 #8 screws (2-1/4" long) through the pre-drilled holes at the top of each jamb upright. See figure #2.

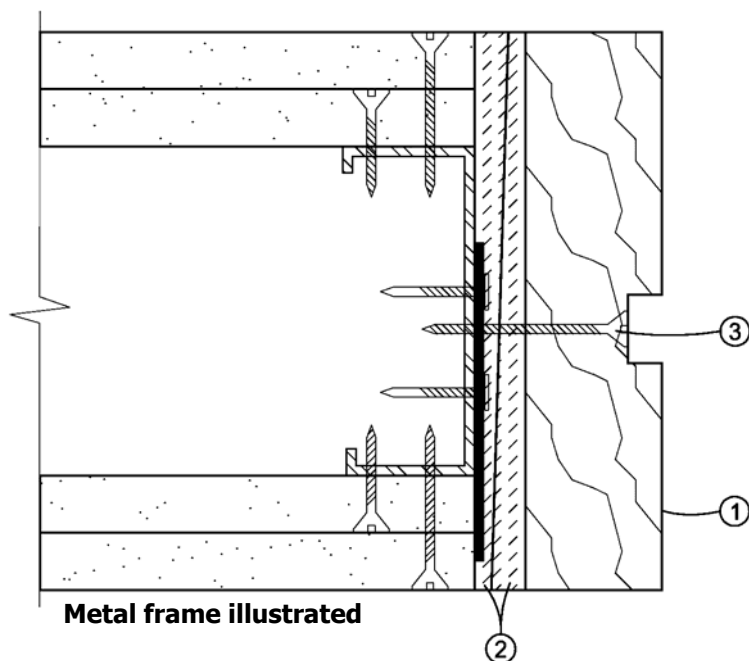
Figure #2
Certified Jamb Assembly Details



Align and square the assembled door jamb inside the rough opening of the wall. Install the wedges approximately 2" from the top and bottom of the hinge side upright to fill the space between the upright and the wall. Install #8 screws (2-1/4") through the upright in line with the approximate center of the door stop, either just above or below the wedges. After, do the same to the other upright. Ensure that the header and uprights are plumb and square to the header. See figure #3.

Figure #3
Installing the wedges
and fixing the uprights
to the rough opening

- ① Certified jamb
- ② Wedges installed at each hinge on each side of the jamb
- ③ #8 screws (2-1/4"), 1" above or below each wedge



INSTALLING THE DOOR IN THE FRAME

Hang the door in the jamb using only the top and bottom hinges. Close the door to verify and adjust the alignment of the door stops and to make sure that the maximum space between the door and the jamb is 1/8" both between the header and the uprights. In the case of paired doors, the same 1/8" space should be between the doors. Once the alignment is completed, install the wedges, with a maximum of 26" on centers, between the wall and the uprights as well as the header. Screw in and tighten #8 screws (2-1/4" long) through the uprights into the wall either above or below the wedges; and through the header into the wall on each side if wedges were used. Check the opening again and adjust as needed. Install the remaining hinges with the screws supplied, except for one 2-1/4" #10 screw that will be screwed through the 2" x 12" steel plate that you have previously set in place.

Door stops, supplied loose, must be installed with 1-1/2" spiral finishing nails on 12" centers.

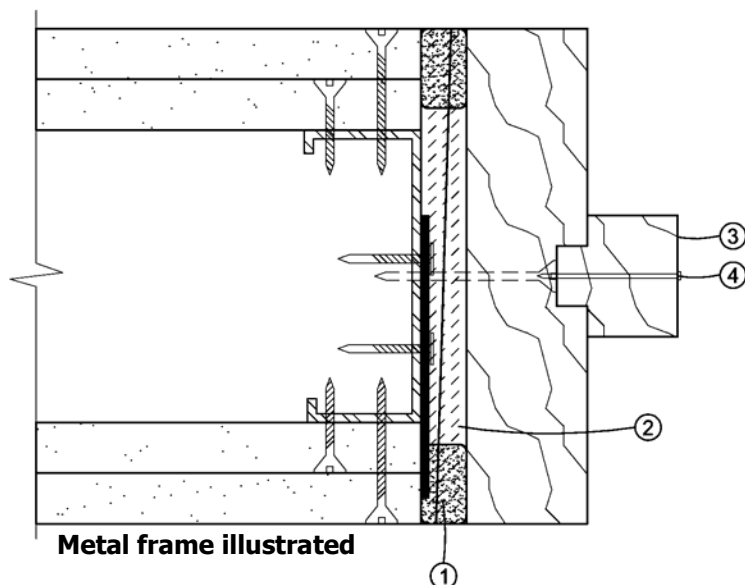
For flush bolts or latchset strikes, cut to length and insert 1/8" inside diameter steel screw sleeves through 7/16" diameter holes (job site prepared – **taking care not to pierce the metal plate**) to span the distance between the strike and the rough frame with the 2" x 12" x 20 ga. previously installed metal support. Install strikes with #10 screws 2-1/4" long. This mentioned procedure for strikes and flush bolts must be adhered to for all latching hardware.

FINISHING TOUCHES

Check and adjust the hardware to insure that the door(s) close and latch automatically. Remove the excess wedge material on each side of the door jamb either by breaking or sawing them. Apply the caulking in such a manner as to fill in the spaces between the jamb and the wall to a depth of at least 1 inch. See figure #4. This can be accomplished with trowels or with a tube of caulking and a pistol grip caulking dispenser. For masonry walls, smooth the caulking between the jamb and the wall.

Figure #4 Install the door stop and apply the caulking

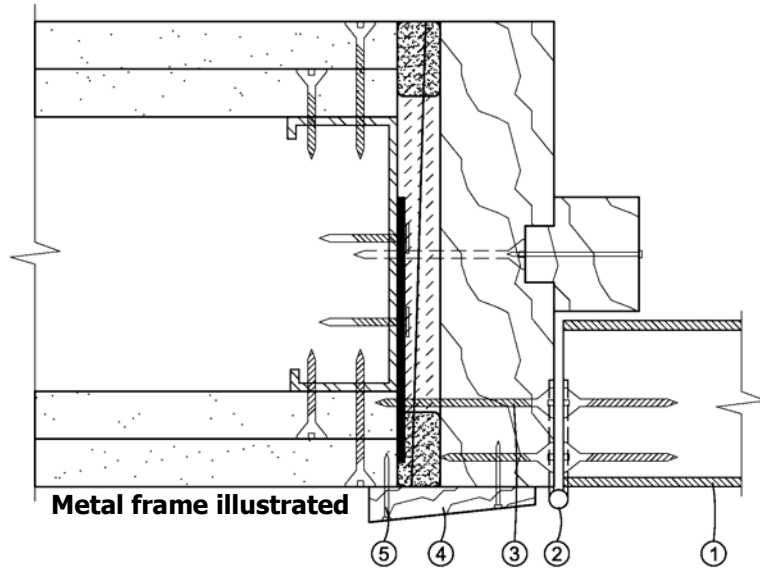
- ① At least 1" of caulking between the wedges
- ② Wedges
- ③ Door stop
- ④ Spiral finishing nail, 1-1/2" long, on 12" centers



After the caulking material has hardened, install the casing to cover the spaces between the jamb uprights, header and the walls with finishing nails on a maximum 24" centers. See figure #5. The nails should be of a length that gives a penetration into the frame of at 1/2".

Figure #5
Install the door
in the jamb

- ① Certified fireproof door
- ② Steel hinges
4" x 4-1/2" x 0.134"
- ③ 1 #10 screw,
2-1/4" long,
at each hinge and strike
- ④ Casing,
either solid wood or
veneer covered MDF
- ⑤ Finishing nail



THIS DOCUMENT IS ALSO AVAILABLE ON OUR WEBSITE
WWW.LAMBTONDOORS.COM
UNDER JAMBS SECTION