



LAMBTON JAMB SERIES

INSTALLATION INSTRUCTIONS

NON-RATED & 20 MINUTE WOOD JAMBS

OPENINGS TO THE WORLD

IMPORTANT NOTICE

**WARRANTY WILL BE HONORED ONLY IF THE JAMBS HAVE BEEN INSTALLED
IN ACCORDANCE TO THESE INSTALLATION INSTRUCTIONS**

GENERAL INFORMATION

Note

- Wood wedges may be used in the installation procedures. Therefore, only the term "wedge" will be mentioned.
- You may install any solid wood or veneer covered M.D.F as a casing.
- To avoid damaging your jamb, all screw holes should be pre-drilled for #8 screws using a 3/32" drill bit. Holes which are from 65–70% of the diameter of the screw are best.

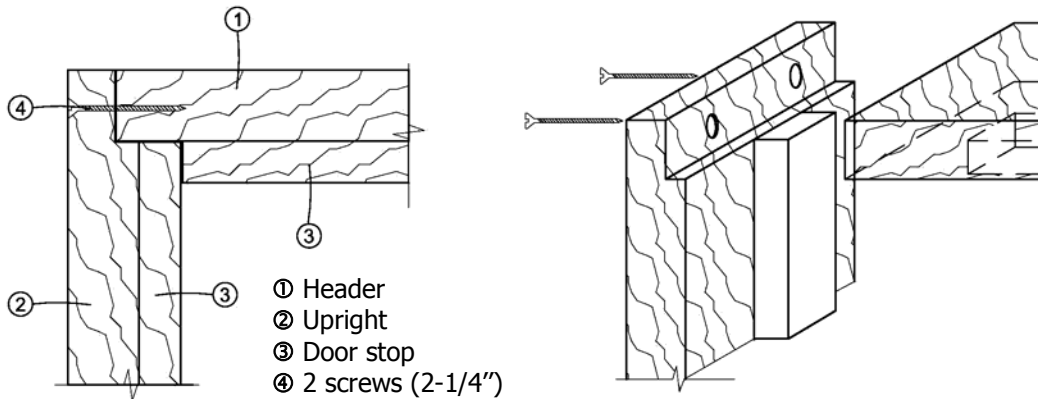
Wall requirements

- Walls framed with wood or metal studs or masonry construction.
- Framing: wood of a nominal dimension of 2" x 4" or a steel frame (25 ga.) of at least 2-1/2".

JAMB ASSEMBLY

Line up the header with the jamb uprights. Insert 2 #8 screws (2-1/4" long) through the pre-drilled holes at the top of each jamb upright. See figure #1.

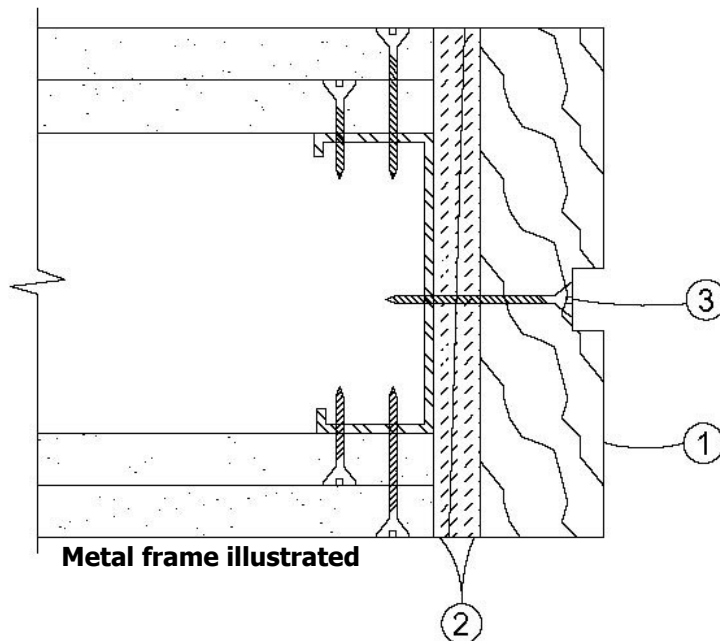
Figure #1
Jamb Assembly Details



Align and square the assembled door jamb inside the rough opening of the wall. Install the wedges approximately 2" from the top and bottom of the hinge side upright to fill the space between the upright and the wall. Install #8 screws (2-1/4") through the upright in line with the approximate center of the door stop, either just above or below the wedges. After, do the same to the other upright. Ensure that the header and uprights are plumb and square to the header. See figure #2.

Figure #2
Installing the wedges
and fixing the uprights to
the rough opening

- ① Jamb
- ② Wedges installed at each hinge on each side of the jamb
- ③ #8 screws (2-1/4"), 1" above or below each wedge



INSTALLING THE DOOR IN THE FRAME

Hang the door in the jamb using only the top and bottom hinges. Close the door to verify and adjust the alignment of the door stops and to make sure that the maximum space between the door and the jamb is 1/8" both between the header and the uprights. In the case of paired doors, the same 1/8" space should be between the doors. Once the alignment is completed, install the wedges, with a maximum of 26" on centers, between the wall and the uprights as well as the header. Screw in and tighten #8 screws (2-1/4" long) through the uprights into the wall either above or below the wedges; and through the header into the wall on each side if wedges were used. Check the opening again and adjust as needed. Install the remaining hinges with the screws supplied, except for one 2-1/4" #10 screw that will be screwed through the 2" x 12" steel plate that you have previously set in place.

Door stops, supplied loose, must be installed with 1-1/2" spiral finishing nails on 12" centers.

FINISHING TOUCHES

Check and adjust the hardware to insure that the door(s) close and latch automatically. Remove the excess wedge material on each side of the door jamb either by breaking or sawing them.

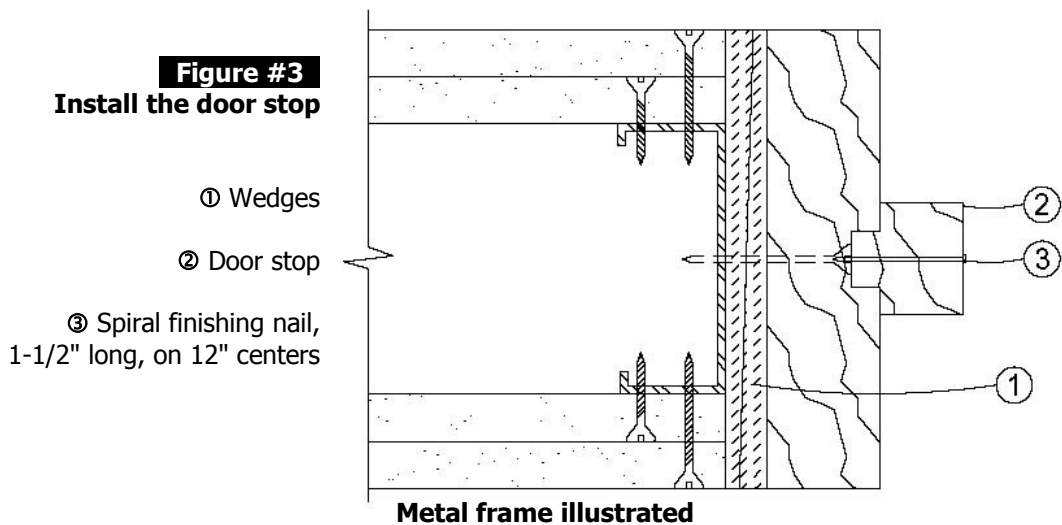
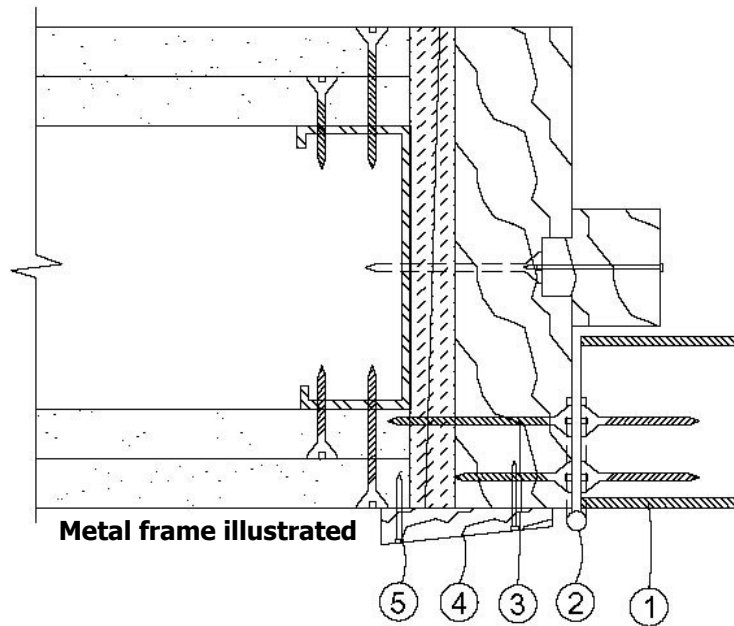


Figure #4
Install the door
in the frame

- ① Door
- ② Steel hinges
4" x 4-1/2" x 0.134"
- ③ 1 #10 screw,
2-1/4" long,
at each hinge and strike
- ④ Casing,
either solid wood,
or veneer covered MDF
- ⑤ Finishing nail



THIS DOCUMENT IS ALSO AVAILABLE ON OUR WEBSITE
WWW.LAMBTONDOORS.COM
UNDER JAMBS SECTION