



**LAMBTON
DOORS**
COMMERCIAL AND ARCHITECTURAL
DOOR MANUFACTURER

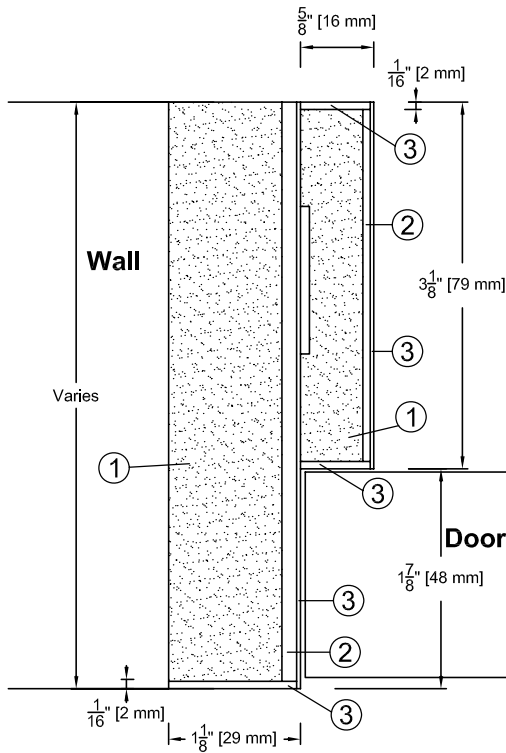
Tel. : 418.486.7401
Fax : 418.486.7381

Tel. (USA) : 1.800.363.2248
Tel. (CAN) : 1.800.463.3124
Fax (USA / CAN) : 1.800.561.7443

Commercial and Architectural Jambs

LAMBTON 45/60/90 MINUTE JAMB

Rabbet Jamb RJ-90



SPECIFICATIONS	DESCRIPTION
----------------	-------------

Wall Thickness	Minimum 5" (127 mm) Rated wall as per code requirements
Wood Casing	By others
Conforms to	Conforms for use with Positive Category A or B firedoors and Neutral Pressure firedoors
Maximum Opening	Single: 48" (1219 mm) x 96" (2438 mm) Pair: 96" (2438 mm) x 96" (2438 mm)
Assembly	Dado's pre-drilled and countersunk for #8 wood screw (Screws supplied by others)
Shipping	Knock down
Wrapping	Bundle wrapped
Suggested Rough Opening Dimensions	For single or pair doors Width : Interior opening of frame + 2-3/4" (70 mm) Height : Interior opening of frame + 1-3/8" (35 mm) (After Finished Floor) Eg. 36" x 84" interior opening (914 x 2134 mm) Rough opening should be : Width : 36" + 2-3/4" = 38-3/4" (984 mm) Height : 84" + 1-3/8" = 85-3/8" (2169 mm)

- ① Fire Proof Composition Material (FPCM)
- ② Crossband
- ③ Veneer



WDMAC



AWI



AWMAC