



**LAMBTON
DOORS**
COMMERCIAL AND ARCHITECTURAL
DOOR MANUFACTURER

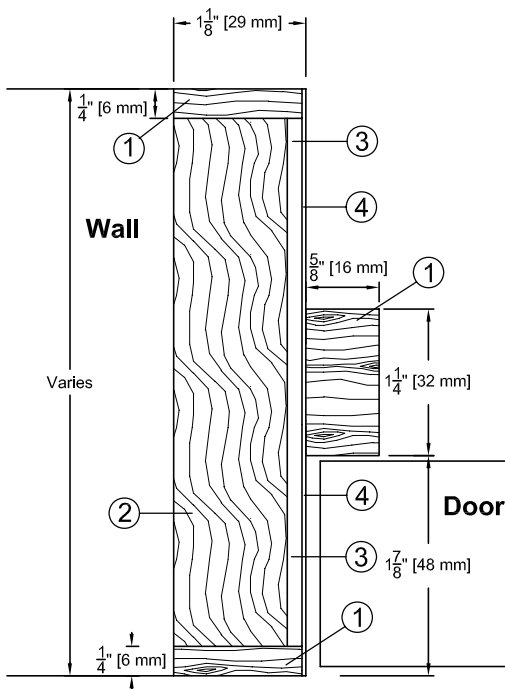
Tel. : (418) 486-7401
Fax : (418) 486-7381

Tel. (USA): 1 800 363-2248
Tel. (CAN): 1 800 463-3124
Fax (USA / CAN): 1 800 561-7443

Commercial and Architectural Jambs

LAMBTON 20 MINUTE JAMB

T Jamb TJ-20



- ① Hardwood
- ② Structural Composite Lumber (SCL)
- ③ Crossband
- ④ Veneer

SPECIFICATIONS	DESCRIPTION
Wall Thickness	Minimum 3-5/8" (92 mm) Rated wall as per code requirements
Wood Casing	By others
Conforms to	Conforms for use with Positive and Neutral Pressure firedoors
Maximum Opening	Single: 48" (1219 mm) x 108" (2743 mm) Pair: 96" (2438 mm) x 108" (2743 mm)
Assembly	Dado's pre-drilled and countersunk for #8 wood screw (Screws supplied by others)
Shipping	Knock down
Wrapping	Bundle wrapped
Suggested Rough Opening Dimensions	For single or pair doors Width : Interior opening of frame + 2-3/4" (70 mm) Height : Interior opening of frame + 1-3/8" (35 mm) (After Finished Floor) Eg. 36" x 84" interior opening (914 x 2134 mm) Rough opening should be : Width : 36" + 2-3/4" = 38-3/4" (984 mm) Height : 84" + 1-3/8" = 85-3/8" (2169 mm)

