



COMMERCIAL AND ARCHITECTURAL
DOOR MANUFACTURER

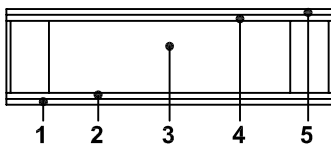
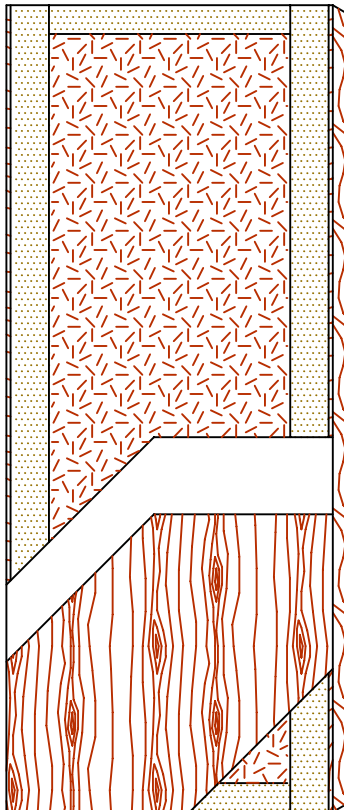
U.S.A. : 1 800 363.2248
Can. : 1 800 463.3124
sales@lambtondoors.com

COMMERCIAL AND ARCHITECTURAL DOORS

Particleboard core

Compatible edge **5-8300-CE**

Matching edge **5-8300-ME**



SPECIFICATIONS	DESCRIPTION
----------------	-------------

Type	Particleboard core (interior use).
In conformity with industry standards	ARCHITECTURAL WOODWORK STANDARDS-ED.1 W.D.M.A. SERIES I.S.1-A-2004 CSA 0132.2 SERIES 90 ASTM D5456-09 ANSI A208.1
Thickness	1-3/4" (44 mm).
Maximum size	48" x 120" (1 219 mm x 3 048 mm).
Stiles	CE: 7/16" (11 mm) wood (mill option) laminated to 4" (102 mm) structural composite lumber (SCL). ME: 7/16" (11 mm) hardwood laminated to 4" (102 mm) structural composite lumber (SCL).
Rails	3" (76 mm) structural composite lumber (SCL).
Core	Particleboard core with a density of 28-32 PCF (449-513 kg/m ³) LD-1, bonded to the stiles and rails.
Adhesive	Type I (waterproof); PVA (no urea formaldehyde); VOC<0.683 g/L.
Face	Wood veneer or MDO bonded to a composite crossband.
Options	<ul style="list-style-type: none"> ● LD-2 core available. ● 20 minute rating neutral or positive pressure. Refer to Fire Door Section of our website for details. ● 15/16" (24 mm) wood (mill option) or hardwood laminated to 4" (102 mm) structural composite lumber (SCL).
Life and louver opening	Wood louvers not permitted in 20 minute labeled doors. Minimum 5" (127 mm) from stiles or rails. Minimum 1-1/2" (38 mm) from cut-out to cut-out. Refer to Option Section of our website for details.
Notes	Stile and rail dimensions shown are rough sizes, before trimming. Dimensions will vary due to prefit requirements.
Warranty	Life of original installation. See our complete warranty for details.
Factory Finish	UV Finishing System. Stain, clearcoat, opaque and primed finish available. Custom color matching available. Seal top and bottom standard. No VOC.

Environmental Description Recycled content (LEED MRc4.1, 4.2).



INFORMATION WWW.LAMBTONDOORS.COM

