



COMMERCIAL AND ARCHITECTURAL  
DOOR MANUFACTURER

U.S.A. : 1 800 363.2248  
Can. : 1 800 463.3124  
sales@lambtondoors.com

# COMMERCIAL AND ARCHITECTURAL DOORS

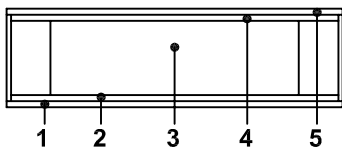
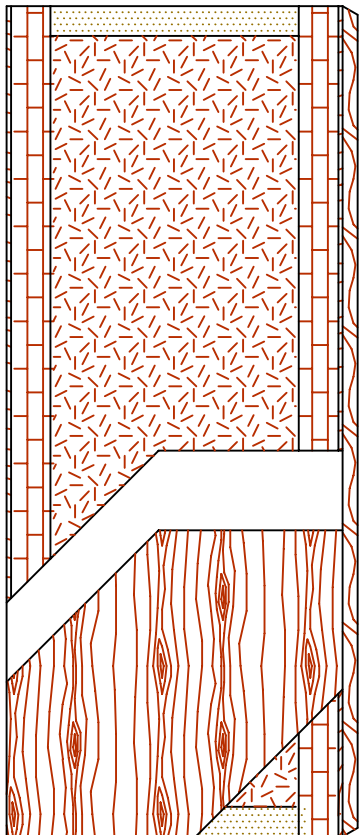


**Particleboard core**  
**FSC CERTIFIED**

**NO UREA FORMALDEHYDE**

Compatible edge **5-FS8300-PCE**

Matching edge **5-FS8300-PME**



## SPECIFICATIONS DESCRIPTION

<b>Type</b>	FSC Certified Particleboard Core (interior use).
<b>In conformity with industry standards</b>	ARCHITECTURAL WOODWORK STANDARDS-ED.1 W.D.M.A. SERIES I.S.1-A-2004 CSA 0132.2 SERIES 90 ASTM D5456-09 ANSI A208.1
<b>Thickness</b>	1-3/4" (44 mm).
<b>Maximum size</b>	48" x 120" (1 219 mm x 3 048 mm).
<b>Stiles</b>	<b>PCE:</b> 7/16" (11 mm) wood (mill option) laminated to 4" (102 mm) low density wood, assembled by multiple splices. <b>PME:</b> 7/16" (11 mm) hardwood laminated to 4" (102 mm) low density wood, assembled by multiple splices.
<b>Rails</b>	3" (76 mm) structural composite lumber (SCL).
<b>Core</b>	Particleboard core with a density of 32-36 PCF (513-577 kg/m <sup>3</sup> ) LD-2, bonded to stiles and rails. <b>No added urea formaldehyde resins.</b> 100%; Pre-Consumer Recycled Content; <b>FSC Certified.</b>
<b>Adhesive</b>	Type I (waterproof); PVA (no urea formaldehyde); <b>VOC&lt;0.683 g/L.</b>
<b>Face</b>	Wood veneer or MDO bonded to a UF free composite crossband. <b>No added urea formaldehyde resins.</b>
<b>Option</b>	20 minute rating neutral or positive pressure. Refer to Fire Door Section of our Website for details.
<b>Lite and louver opening</b>	Wood louvers not permitted in 20 minute labeled doors. Minimum 5" (127 mm) from stiles or rails. Minimum 1-1/2" (38 mm) from cut-out to cut-out. Refer to Options Section of our Website for details.
<b>Notes</b>	Stile and rail dimensions shown are rough sizes, before trimming. Dimensions will vary due to prefit requirements.
<b>Warranty</b>	Life of original installation. See our complete warranty for details.
<b>Factory finish</b>	UV Finishing System. Stain, clearcoat, opaque and primed finish available. Custom color matching available. Seal top and bottom standard. <b>No VOC.</b>
<b>Environmental description</b>	Recycled content ( <b>LEED MRc4.1, 4.2</b> ). FSC Certified Wood ( <b>LEED MRc7</b> ). Low Emitting Materials ( <b>LEED EQc4.4</b> ).



The FSC logo identifies products which contain wood from well-managed forests certified in accordance with the rules of the Forest Stewardship Council.



INFORMATION [WWW.LAMBTONDOORS.COM](http://WWW.LAMBTONDOORS.COM)