



COMMERCIAL AND ARCHITECTURAL  
DOOR MANUFACTURER

U.S.A. : 1 800 363.2248  
Can. : 1 800 463.3124  
sales@lambtondoors.com

# COMMERCIAL AND ARCHITECTURAL DOORS

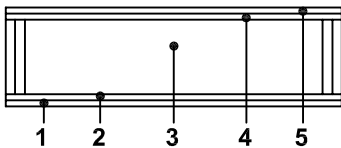
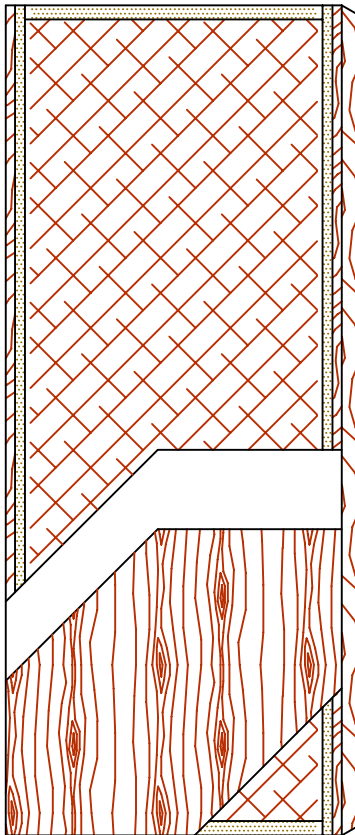


## Hollow core

NO UREA FORMALDEHYDE

Compatible edge **5-UFHC-ECE**

Matching edge **5-UFHC-EME**



### SPECIFICATIONS DESCRIPTION

<b>Type</b>	Hollow core (interior use).
<b>In conformity with industry standards</b>	ARCHITECTURAL WOODWORK STANDARDS-ED.1 W.D.M.A. SERIES I.S.1-A-2004 CSA 0132.2 SERIES 90
<b>Thickness</b>	1-3/8" (35 mm) – 1-3/4" (44 mm).
<b>Maximum size</b>	48" x 108" (1 219 mm x 2 743 mm).
<b>Stiles</b>	<b>ECE:</b> 15/16" (24 mm) wood (mill option) laminated to 1" (25 mm) structural composite lumber (SCL). <b>EME:</b> 15/16" (24 mm) hardwood laminated to 1" (25 mm) structural composite lumber (SCL).
<b>Rails</b>	1-7/16" (36 mm) structural composite lumber (SCL).
<b>Core</b>	Hollow core (mill option).
<b>Adhesive</b>	Type I (waterproof); PVA (no urea formaldehyde); <b>VOC&lt;0.683 g/L.</b>
<b>Face</b>	Wood veneer or MDO bonded to a UF free composite crossband. <b>No added urea formaldehyde resins.</b>
<b>Options</b>	<ul style="list-style-type: none"> <li>● 4" (102 mm) stiles blocking available, lock side. Blocking material is mill option.</li> <li>● Available in bifold.</li> </ul>
<b>Lite and louver opening</b>	Not available.
<b>Notes</b>	Stile and rail dimensions shown are rough sizes, before trimming. Dimensions will vary due to prefit requirements.
<b>Warranty</b>	Life of original installation. See our complete warranty for details.
<b>Factory finish</b>	UV Finishing System. Stain, clearcoat, opaque and primed finish available. Custom color matching available. Seal top and bottom standard. <b>No VOC.</b>

<b>Environmental description</b>	Low Emitting Materials ( <b>LEED EQc4.4</b> ). Recycled content ( <b>LEED MRc4.1, 4.2</b> )	
----------------------------------	--	--

### INFORMATION WWW.LAMBTONDOORS.COM

