



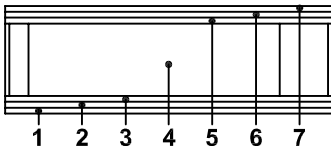
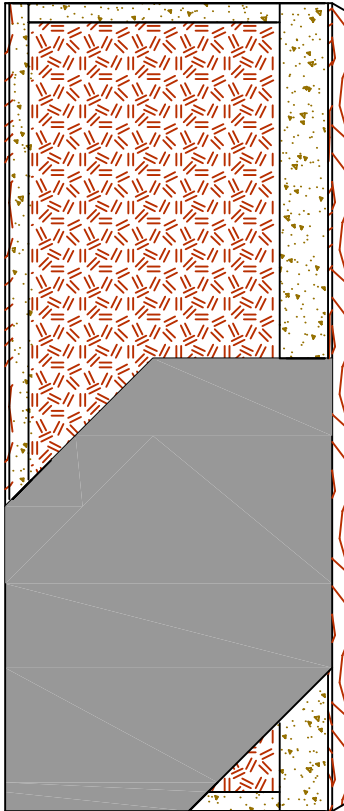
COMMERCIAL AND ARCHITECTURAL
DOOR MANUFACTURER


U.S.A. : 1 800 363.2248
Can. : 1 800 463.3124
sales@lambtondoors.com

COMMERCIAL AND ARCHITECTURAL DOORS

Agrifiber door 45 minute fire rating

Compatible edge **7-AG45-CE**



SPECIFICATIONS	DESCRIPTION
Type	Agrifiber core (interior use).
In conformity with industry standards	ARCHITECTURAL WOODWORK STANDARDS-ED.1 W.D.M.A. SERIES I.S.1-A-2004 CSA 0132.2 SERIES 90
Thickness	1-3/4" (44 mm).
Maximum size	48" x 108" (1 219 mm x 2 743 mm).
Stiles	7/16" (11 mm) wood (mill option) laminated to proprietary materials. (FPCM)* Lock stile : 5" (127 mm) of proprietary material. (FPCM)* Hinge stiles : 2" (51 mm) of proprietary material. (FPCM)*
Rails	2" (51 mm) of proprietary material. (FPCM)*
Core	Low combustion proprietary agrifiber core.
Adhesive	Type I (waterproof); PVA (no urea formaldehyde); VOC<0.683 g/l.
Face	Hardboard.
Options	<ul style="list-style-type: none"> ● Neutral or positive pressure. ● Blocking for hardware. Refer to Fire Door Section of our website for details.
Lite and louver opening	Cut-out for lite and louver with size limitations. Refer to Option Section of our Website for details.
Notes	Stile and rail dimensions shown are rough sizes, before trimming. Dimensions will vary due to prefit requirements.
Warranty	Life of original installation. See our complete warranty for details.
Factory finish	UV Finishing System. White primer available. Seal top and bottom standard. No VOC.
Environmental description	Recycled content (LEED MRc4.1, 4.2). Rapidly renewable material (LEED MRc6). 

* Fire Proof Composite Material

INFORMATION WWW.LAMBTONDOORS.COM

