



COMMERCIAL AND ARCHITECTURAL
DOOR MANUFACTURER

U.S.A. : 1 800 363.2248

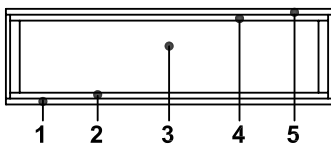
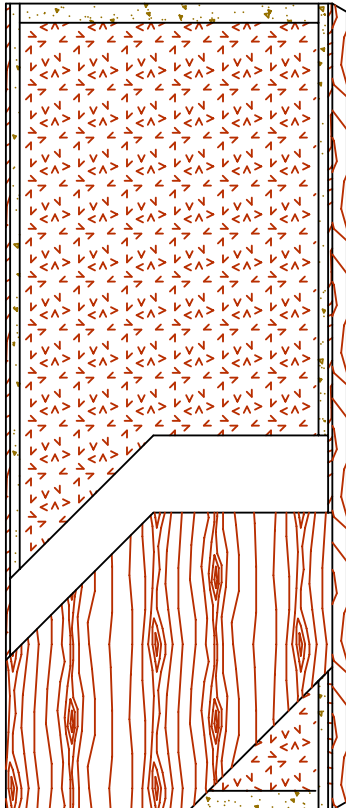
Can. : 1 800 463.3124

info@lambtondoors.com

COMMERCIAL AND ARCHITECTURAL DOORS

Mineral core 60 and 90 minute fire rating

Blind edge **5-FD60/90-BE**



SPECIFICATIONS	DESCRIPTION
Type	Mineral core (interior use).
In conformity with industry standards	ARCHITECTURAL WOODWORK STANDARDS-ED.1 W.D.M.A. SERIES I.S.1-A-2004
Thickness	1-3/4" (44 mm).
Maximum size	48" x 120" (1 219 mm x 3 048 mm).
Stiles	7/16" (11 mm) hardwood laminated to 1" (25 mm) proprietary materials (FPCM)*.
Top Rail	1-1/2" (38 mm) proprietary materials (FPCM)*.
Bottom Rail	1-1/2" (38 mm) proprietary materials (FPCM)*.
Core	Non-combustible mineral core.
Adhesive	Type I (waterproof); PVA (no urea formaldehyde); VOC<0.683 g/L.
Face	Wood veneer bonded to a composite crossband.
Options	<ul style="list-style-type: none"> ● Neutral or positive pressure. ● Blocking for hardware. Refer to Fire Door Section of our website for details.
Lite and louver openings	Cut-out for lite and louver with size limitations. Refer to Option Section of our website for details.
Notes	Stile and rail dimensions shown are rough sizes, before trimming. Dimensions will vary due to prefit requirements.
Warranty	Life of original installation. See our complete warranty for details.
Factory Finish	UV Finishing System. Stain and clearcoat finish available. Custom color matching available. Seal top and bottom standard. NO VOC.

* Fire Proof Composite Material

