



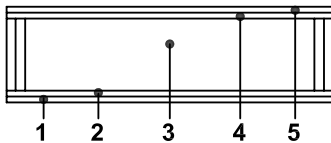
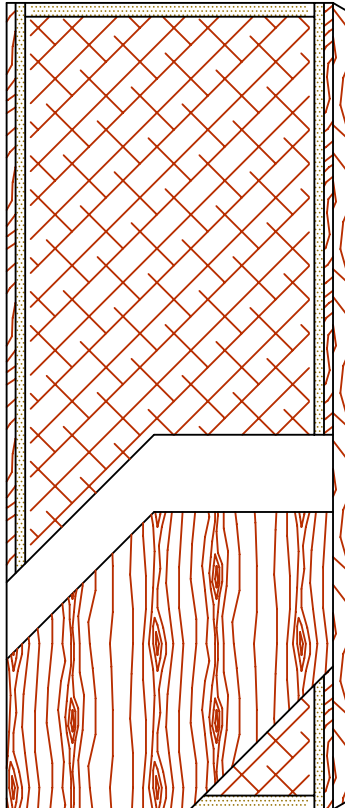
COMMERCIAL AND ARCHITECTURAL  
DOOR MANUFACTURER


U.S.A. : 1 800 363.2248  
Can. : 1 800 463.3124  
info@lambtondoors.com

## COMMERCIAL AND ARCHITECTURAL DOORS

### Hollow core

Compatible edge **5-HC-CE**  
Matching edge **5-HC-ME**



| SPECIFICATIONS                               | DESCRIPTION  |
|--|--|
| <b>Type</b>                                  | Hollow core (interior use).  |
| <b>In conformity with industry standards</b> | ARCHITECTURAL WOODWORK STANDARDS-ED.1<br>W.D.M.A. SERIES I.S.1-A-2004<br>ASTM D5456-09   |
| <b>Thickness</b>                             | 1-3/8" (35 mm) – 1-3/4" (44 mm).   |
| <b>Maximum size</b>                          | 48" x 108" (1 219 mm x 2 743 mm).  |
| <b>Stiles</b>                                | <b>CE:</b> 15/16" (24 mm) wood (mill option) laminated to 1" (25 mm) structural composite lumber (SCL).<br><b>ME:</b> 15/16" (24 mm) hardwood laminated to 1" (25 mm) structural composite lumber (SCL). |
| <b>Rails</b>                                 | 1-7/16" (36 mm) structural composite lumber (SCL).   |
| <b>Core</b>                                  | Hollow core (mill option).   |
| <b>Adhesive</b>                              | Type I (waterproof); PVA (no urea formaldehyde);<br><b>VOC&lt;0.683 g/L.</b>   |
| <b>Face</b>                                  | Wood veneer or MDO bonded to a composite crossband.  |
| <b>Options</b>                               | <ul style="list-style-type: none"> <li>● 4" (102 mm) stiles blocking on lock side. (Blocking material is mill option).</li> <li>● Bifold.</li> </ul>   |
| <b>Lite and louver openings</b>              | Not available.   |
| <b>Notes</b>                                 | Stile and rail dimensions shown are rough sizes, before trimming. Dimensions will vary due to prefit requirements.   |
| <b>Warranty</b>                              | Life of original installation.<br>See our complete warranty for details.   |
| <b>Factory Finish</b>                        | UV Finishing System. Stain, clearcoat, opaque and primed finish available. Custom color matching available. Seal top and bottom standard. <b>No VOC.</b>   |
| <b>Environmental Description</b>             | Recycled content ( <b>LEED MRc4.1, 4.2</b> ).   |

INFORMATION [www.lambtondoors.com](http://www.lambtondoors.com)

