



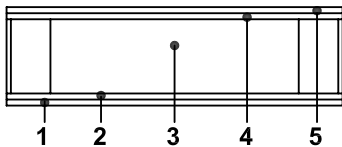
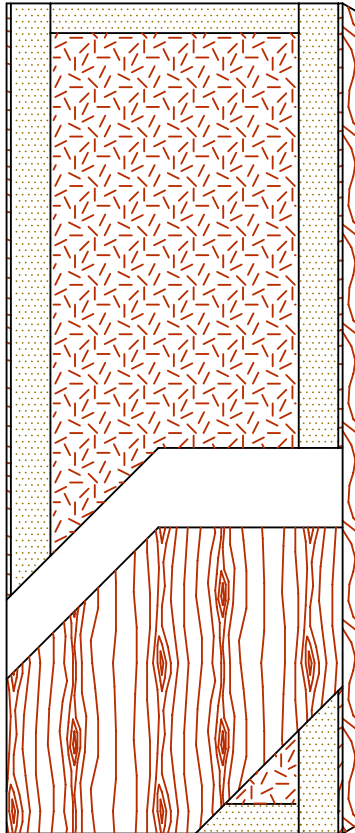
COMMERCIAL AND ARCHITECTURAL
DOOR MANUFACTURER
U.S.A. : 1 800 363.2248
Can. : 1 800 463.3124
info@lambtondoors.com

COMMERCIAL AND ARCHITECTURAL DOORS




Particleboard core
NO UREA FORMALDEHYDE

Compatible edge **5-UF8300-ECE**
Matching edge **5-UF8300-EME**



SPECIFICATIONS DESCRIPTION

Type	Particleboard core (interior use).
In conformity with industry standards	ARCHITECTURAL WOODWORK STANDARDS-ED.1 W.D.M.A. SERIES I.S.1-A-2004 ASTM D5456-09 ANSI A208.1
Thickness	1-3/4" (44 mm).
Maximum size	48" x 120" (1 219 mm x 3 048 mm).
Stiles	ECE: 7/16" (11 mm) wood (mill option) laminated to 4" (102 mm) structural composite lumber (SCL). EME: 7/16" (11 mm) hardwood laminated to 4" (102 mm) structural composite lumber (SCL).
Rails	3" (76 mm) structural composite lumber (SCL).
Core	Particleboard core with a density of 32-36 PCF (513-577 kg/m ³) LD-2 bonded to stiles and rails. No added urea formaldehyde resin. 100% Pre-Consumer Recycled Content.
Adhesive	Type I (waterproof); PVA (no urea formaldehyde); VOC<0.683 g/L.
Face	Wood veneer, HDF or MDO bonded to a UF free composite crossband. No added urea formaldehyde resin.
Options	<ul style="list-style-type: none"> ● 20 minute rating neutral or positive pressure. Refer to Fire Door Section of our website for details. ● 15/16" (24 mm) wood (mill option) laminated to 4" (102 mm) structural composite lumber (SCL).
Lite and louver opening	Wood louvers not permitted in 20 minute labeled doors. Minimum 5" (127 mm) from stiles or rails. Minimum 1-1/2" (38 mm) from cut-out to cut-out. Refer to Options Section of our website for details.
Notes	Stile and rail dimensions shown are rough sizes, before trimming. Dimensions will vary due to prefit requirements.
Warranty	Life of original installation. See our complete warranty for details.
Factory finish	UV Finishing System. Stain, clearcoat, opaque and primed finish available. Custom color matching available. Seal top and bottom standard. No VOC.

Environmental description Recycled content (**LEED MRc4.1, 4.2**). Low Emitting Materials (**LEED EQc4.4**). 



INFORMATION www.lambtondoors.com