



COMMERCIAL AND ARCHITECTURAL
DOOR MANUFACTURER

U.S.A. : 1 800 363.2248
Can. : 1 800 463.3124
info@lambtondoors.com

COMMERCIAL AND ARCHITECTURAL DOORS

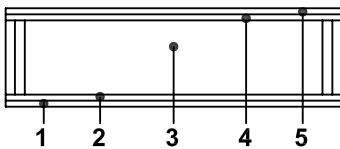
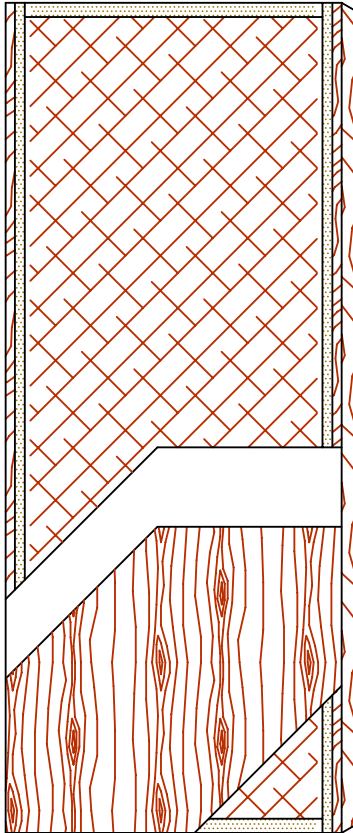


Hollow core

NO UREA FORMALDEHYDE

Compatible edge **5-UFHC-ECE**

Matching edge **5-UFHC-EME**



SPECIFICATIONS DESCRIPTION

Type	Hollow core (interior use).
In conformity with industry standards	ARCHITECTURAL WOODWORK STANDARDS-ED.1 W.D.M.A. SERIES I.S.1-A-2004
Thickness	1-3/8" (35 mm) – 1-3/4" (44 mm).
Maximum size	48" x 108" (1 219 mm x 2 743 mm).
Stiles	ECE: 15/16" (24 mm) wood (mill option) laminated to 1" (25 mm) structural composite lumber (SCL). EME: 15/16" (24 mm) hardwood laminated to 1" (25 mm) structural composite lumber (SCL).
Rails	1-7/16" (36 mm) structural composite lumber (SCL).
Core	Hollow core (mill option).
Adhesive	Type I (waterproof); PVA (no urea formaldehyde); VOC<0.683 g/L.
Face	Wood veneer, HDF or MDO bonded to a UF free composite crossband. No added urea formaldehyde resin.
Options	<ul style="list-style-type: none"> ● 4" (102 mm) stiles blocking available, lock side. Blocking material is mill option. ● Available in bifold.
Lite and louver opening	Not available.
Notes	Stile and rail dimensions shown are rough sizes, before trimming. Dimensions will vary due to prefit requirements.
Warranty	Life of original installation. See our complete warranty for details.
Factory finish	UV Finishing System. Stain, clearcoat, opaque and primed finish available. Custom color matching available. Seal top and bottom standard. No VOC.

Environmental description Low Emitting Materials (**LEED EQc4.4**).
Recycled content (**LEED MRc4.1, 4.2**)



INFORMATION www.lambtondoors.com

