



COMMERCIAL AND ARCHITECTURAL
DOOR MANUFACTURER

U.S.A. : 1 800 363.2248
Can. : 1 800 463.3124
info@lambtondoors.com

COMMERCIAL AND ARCHITECTURAL DOORS

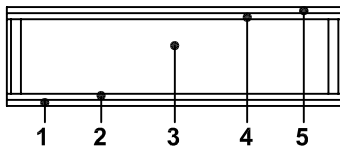
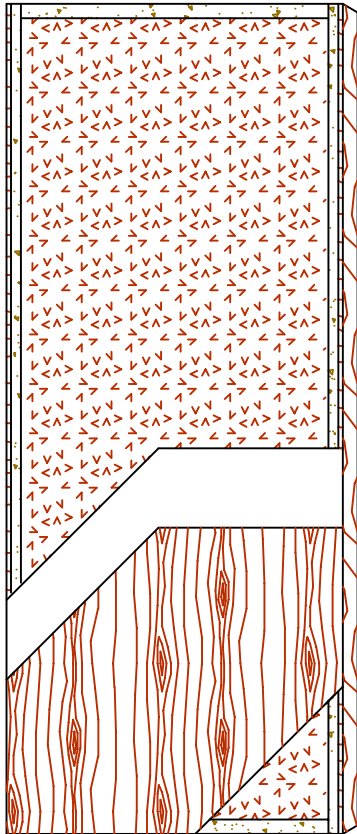


Mineral core
60 and 90 minute fire rating


NO UREA FORMALDEHYDE

Compatible edge **5-FD60/90-ECE**

Matching edge **5-FD60/90-EME**



SPECIFICATIONS DESCRIPTION

Type	Mineral Core (interior use).
In conformity with industry standards	ARCHITECTURAL WOODWORK STANDARDS-ED.1 W.D.M.A. SERIES I.S.1-A-2004
Thickness	1-3/4" (44 mm).
Maximum size	48" x 120" (1 219 mm x 3 048 mm).
Stiles	ECE: 7/16" (11 mm) wood (mill option) laminated to 1" (25 mm) proprietary material (FPCM)*. EME: 7/16" (11 mm) hardwood laminated to 1" (25 mm) proprietary material (FPCM)*.
Rails	1-1/2" (38 mm) proprietary material (FPCM)*.
Core	Non-combustible mineral core.
Adhesive	Type I (waterproof); PVA (no urea formaldehyde); VOC<0.683 g/L.
Face	Wood veneer, HDF or MDO bonded to a UF free composite crossband. No added urea formaldehyde resin.
Options	<ul style="list-style-type: none"> ● Neutral or positive pressure. ● Blocking for hardware. Refer to Fire Door Section of our Website for details.
Lite and louver opening	Cut-out for lites and louvers with size limitations. Refer to Options Section of our Website for details.
Notes	Stile and rail dimensions shown are rough sizes, before trimming. Dimensions will vary due to prefit requirements.
Warranty	Life of original installation. See our complete warranty for details.
Factory finish	UV Finishing System. Stain, clearcoat, opaque and primed finish available. Custom color matching available. Seal top and bottom standard. No VOC.
Environmental description	Low-Emitting Materials (LEED EQc4.4). 

* Fire Proof Composite Material

INFORMATION www.lambtondoors.com



Printed in Canada 2011/10