



COMMERCIAL AND ARCHITECTURAL  
DOOR MANUFACTURER

U.S.A. : 1 800 363.2248

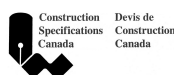
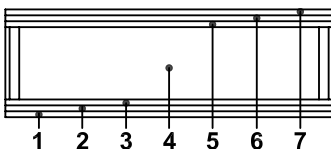
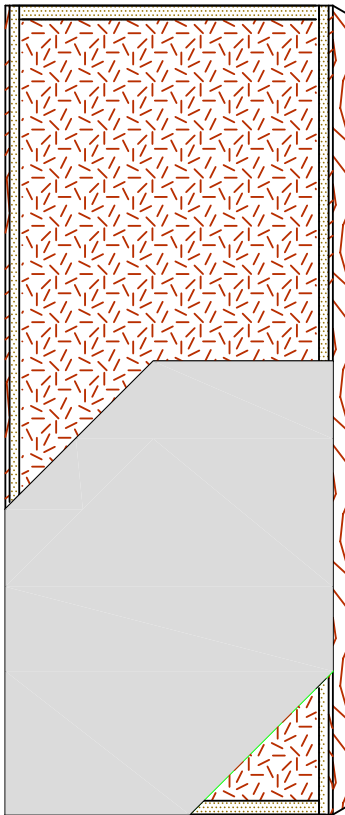
Can. : 1 800 463.3124

info@lambtondoors.com

## COMMERCIAL AND ARCHITECTURAL DOORS

### Particleboard Core

Compatible edge **7-PC-CE**



SPECIFICATIONS	DESCRIPTION
<b>Type</b>	Particleboard core (interior use).
<b>In conformity with industry standards</b>	ARCHITECTURAL WOODWORK STANDARDS-ED.1 W.D.M.A. SERIES I.S.1-A-2004 ASTM D5456-09 ANSI A208.1
<b>Thickness</b>	1-3/8" (35 mm) – 1-3/4" (44 mm). 2" (51 mm) – 2-1/4" (57 mm).
<b>Maximum size</b>	48" x 120" (1 219 mm x 3 048 mm).
<b>Stiles</b>	7/16" (11 mm) wood (mill option) laminated to 1" (25 mm) structural composite lumber (SCL).
<b>Rails</b>	1-7/16" (37 mm) structural composite lumber (SCL).
<b>Core</b>	Particleboard core with a density of 28-32 PCF (449-513 kg/m <sup>3</sup> ) LD-1, bonded to the stiles and rails.
<b>Adhesive</b>	Type I (waterproof); PVA (no urea formaldehyde); <b>VOC&lt;0.683 g/L.</b>
<b>Face</b>	Hardboard.
<b>Options</b>	<ul style="list-style-type: none"> <li>●LD-2 core.</li> <li>●[Door 1-3/4"- (44 mm)] 20 minute rating neutral or positive pressure. Refer to Fire Door Section of our website for details.</li> <li>●15/16" (24 mm) wood (mill option) laminated to 1" (25 mm) structural composite lumber (SCL).</li> <li>●Bifold.</li> </ul>
<b>Lite and louver openings</b>	Wood louvers not permitted in 20 minute labeled doors. Cut-out must not exceed 40% of door area. Minimum 5" (127 mm) from stiles or rails. Minimum 1-1/2" (38 mm) from cut-out to cut-out. Refer to Option Section of our website for details.
<b>Notes</b>	Stile and rail dimensions shown are rough sizes, before trimming. Dimensions will vary due to prefit requirements.
<b>Warranty</b>	Life of original installation. See our complete warranty for details.
<b>Factory Finish</b>	UV Finishing System. White primer available. Seal top and bottom standard. <b>No VOC.</b>
<b>Environmental Description</b>	Recycled content ( <b>LEED MRc4.1, 4.2</b> ).

INFORMATION [www.lambtondoors.com](http://www.lambtondoors.com)

