



**COMMERCIAL AND ARCHITECTURAL  
DOOR MANUFACTURER**

Tel.: 1.418.486.7401

Fax: 1.418.486.7381

CAN.: 1.800.463.3124

USA: 1.800.363.2248

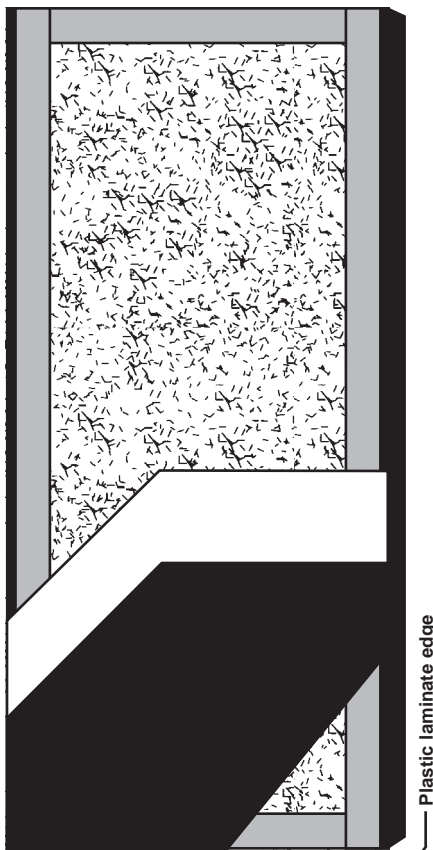
Fax: 1.800.561.7443

# Commercial and Architectural Doors

## HIGH PRESSURE DECORATIVE LAMINATE

### HPDL-5-8300-CE HPDL-5-8300-PE

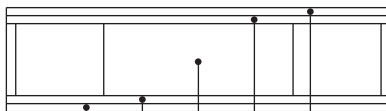
Compatible edge  
Plastic edge



Plastic laminate edge



PE



CE

SPECIFICATIONS	DESCRIPTION
----------------	-------------

<b>Type</b>	Particle core (interior use).
<b>In conformity with industry standards</b>	A.W.I. SECTION 1300 W.D.M.A. SERIES I.S.1 – A-97 CSA 0132.2 SERIES 90 ASTM D5456-01ae1
<b>Thickness</b>	1-3/4" (44 mm).
<b>Maximum size</b>	48" x 120" (1219 mm x 3048 mm).
<b>Stiles</b>	<b>CE:</b> 7/16" (11 mm) wood (mill option) laminated to 4" (102 mm) structural composite lumber (SCL)*. <b>PE:</b> Plastic laminate edge bonded to 4" (102 mm) structural composite lumber (SCL)*.
<b>Rails</b>	3" (76 mm) structural composite lumber (SCL)*. Sealed after trim.
<b>Core</b>	Particle core with a density of 28-32 PCF (449-513 kg/m <sup>3</sup> ) bonded to the stiles and rails. Conforms with ANSI A208.1.
<b>Adhesive</b>	Type I, hot pressing.
<b>Face</b>	High pressure decorative laminate bonded to a composite crossband (mill option).
<b>Options</b>	WHI 20 minute rating negative or positive pressure. 15/16" (24 mm) wood (mill option) laminated to 4" (102 mm) structural composite lumber (SCL)*.
<b>Lite and louver opening</b>	Cut-out must not exceed 40% of door area. Minimum 5" (127 mm) from stiles or rails.
<b>Notes</b>	Stile and rail dimensions shown are rough sizes, before trimming. Dimensions will vary due to prefit requirements.
<b>Warranty</b>	Life of original installation. See our complete warranty for details.

\* For structural composite lumber (SCL), Lambton Doors uses laminated strand lumber (LSL) with a density of 38 PCF (609 kg/m<sup>3</sup>).

