

We believe.



COMMERCIAL AND ARCHITECTURAL
DOOR MANUFACTURER

OPENINGS TO THE WORLD

CUSTOMER SERVICE

TEL

418.486.7401
1 800 463.3124 (CAN)
1 800 363.2248 (USA)

FAX

418.486.7381
1 800 561.7443 (CAN / USA)

WEB

WWW.LAMBTONDOORS.COM
SALES@LAMBTONDOORS.COM

MAIL

235, 2ND AVENUE, LAMBTON
(QUEBEC) CANADA G0M 1H0



We believe in
Good
Forestry
Stewardship
Practices

The FSC logo identifies products which contain wood
from well-managed forests certified in accordance with
the rules of the Forest Stewardship Council.



We believe in
changes in the
land-use practices
to conserve forests
for the future



We believe in a
transformed
built environment
contributing to
a sustainable future

THE MISSION

The mission of Lambton Doors is to develop, manufacture and sell high quality and value added interior wood doors and frames, of standard and ecological types, for the commercial, architectural and institutional markets.

These doors and frames meet the various North American building codes, as well as environmental codes when applicable, while respecting the customers' requirements.

Printed in Canada

Lambton Doors has chosen to print this brochure on
Unisource Chorus Art recycled paper



COMMERCIAL AND ARCHITECTURAL
DOOR MANUFACTURER

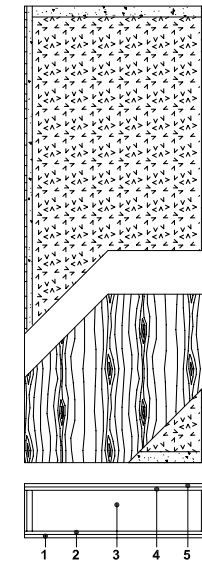
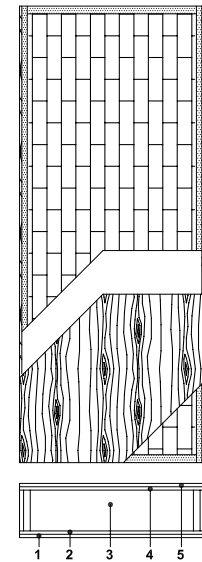
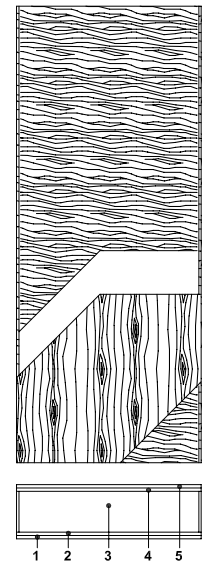
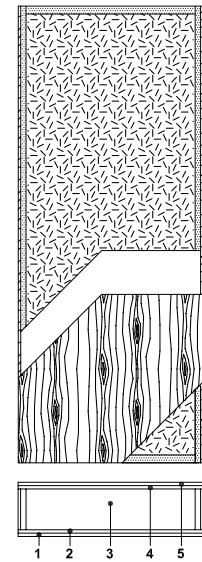
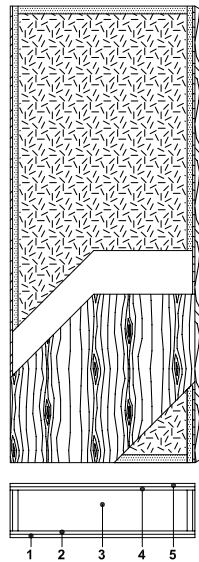
OPENINGS TO THE WORLD



LD-V03 10/2009

5 PLY

COMMERCIAL AND ARCHITECTURAL DOORS



EnviroDesign
SERIES NO UF™

	5-FSPC-EME No Urea Formaldehyde	5-UFPC-EME No Urea Formaldehyde	5-LSL-EME No Urea Formaldehyde	5-FSLC-EME No Urea Formaldehyde	5-FD45/60/90-EME No Urea Formaldehyde
Type	FSC Certified Particleboard Core (interior use).	Particleboard Core (interior use).	Laminated strand lumber core (interior use).	FSC Certified Slave Lumber Core (interior use).	Mineral core (interior use).
In conformity with industry standards	ARCHITECTURAL WOODWORK STANDARDS-ED.1 W.D.M.A. SERIES I.S.1-A-2004 CSA 0132.2 SERIES 90 ASTM D5456-09 ANSI A208.1	ARCHITECTURAL WOODWORK STANDARDS-ED.1 W.D.M.A. SERIES I.S.1-A-2004 CSA 0132.2 SERIES 90 ASTM D5456-09 ANSI A208.1	ARCHITECTURAL WOODWORK STANDARDS-ED.1 W.D.M.A. SERIES I.S.1-A-2004 CSA 0132.2 SERIES 90 ASTM D5456-09	ARCHITECTURAL WOODWORK STANDARDS-ED.1 W.D.M.A. SERIES I.S.1-A-2004 CSA 0132.2 SERIES 90 ASTM D5456-09	ARCHITECTURAL WOODWORK STANDARDS-ED.1 W.D.M.A. SERIES I.S.1-A-2004 CSA 0132.2 SERIES 90
Thickness	1-3/4" (44 mm).	1-3/4" (44 mm).	1-3/8" (35 mm) - 1-3/4" (44 mm).	1-3/4" (44 mm).	1-3/4" (44 mm).
Maximum size	48" x 120" (1219 mm x 3048 mm).	48" x 120" (1219 mm x 3048 mm).	48" x 120" (1219 mm x 3048 mm).	48" x 108" (1219 mm x 2743 mm).	48" x 120" (1219 mm x 3048 mm).
Stiles	7/16" (11 mm) hardwood laminated to 1" (25 mm) structural composite lumber (SCL).	7/16" (11 mm) hardwood laminated to 1" (25 mm) structural composite lumber (SCL).	7/16" (11 mm) hardwood.	7/16" (11 mm) hardwood laminated to 1" (25 mm) structural composite lumber (SCL).	7/16" (11 mm) hardwood laminated to 1" (25 mm) structural composite lumber (SCL).
Rails	1-7/16" (36 mm) structural composite lumber (SCL).	1-7/16" (36 mm) structural composite lumber (SCL).	1-7/16" (36 mm) structural composite lumber (SCL).	1-7/16" (36 mm) structural composite lumber (SCL).	2" (51 mm) proprietary material (FPCM*).
Core	Particleboard core with a density of 32-36 PCF, (513-577 kg/m ³) – LD-2, bonded to stiles and rails. No added urea formaldehyde resins. 100% Pre-Consumer Recycled Content; FSC Certified	Particleboard core with a density of 32-36 PCF, (513-577 kg/m ³) – LD-2, bonded to stiles and rails. No added urea formaldehyde resins. 100% Pre-Consumer Recycled Content.	Structural composite lumber (SCL) with a density of 38 PCF (609 kg/m ³) bonded to the stiles. No added urea formaldehyde resins.	Random lengths of low-density wood blocks bonded to the stiles and rails. No added urea formaldehyde resins. FSC certified.	Non-combustible mineral core.
Adhesive	Type I (waterproof); PVA (no urea formaldehyde); VOC < 0.683 g/L	Type I (waterproof); PVA (no urea formaldehyde); VOC < 0.683 g/L	Type I (waterproof); PVA (no urea formaldehyde); VOC < 0.683 g/L	Type I (waterproof); PVA (no urea formaldehyde); VOC < 0.683 g/L	Type I (waterproof); PVA (no urea formaldehyde); VOC < 0.683 g/L
Face	Wood veneer or MDO bonded to a UF free composite crossband. No added urea formaldehyde resins.	Wood veneer or MDO bonded to a UF free composite crossband. No added urea formaldehyde resins.	Wood veneer or MDO bonded to a UF free composite crossband. No added urea formaldehyde resins.	Wood veneer or MDO bonded to a UF free composite crossband. No added urea formaldehyde resins.	Wood veneer or MDO bonded to a UF free composite crossband. No added urea formaldehyde resins.
Options	20 minute rating neutral or positive pressure. Refer to Fire Door Section of our Website for details.	20 minute rating neutral or positive pressure. Refer to Fire Door Section of our Website for details.	[Door 1-3/4" (44 mm)] 20 minute rating neutral or positive pressure. Refer to Fire Door Section of our website for details.	20 minute rating neutral or positive pressure. Refer to Fire Door Section of our Website for details.	• Neutral or positive pressure. • Blocking for hardware. Refer to Fire Door Section of our Website for details.
Lite and louver opening	Wood louvers not permitted in 20 minute labeled doors. Minimum 5" (127 mm) from stiles or rails. Minimum 1-1/2" (38 mm) from cut-out to cut-out. Refer to Options Section of our Website for details.	Wood louvers not permitted in 20 minute labeled doors. Minimum 5" (127 mm) from stiles or rails. Minimum 1-1/2" (38 mm) from cut-out to cut-out. Refer to Options Section of our Website for details.	Wood louvers not permitted in 20 minute labeled doors. Minimum 5" (127 mm) from stiles or rails. Minimum 1-1/2" (38 mm) from cut-out to cut-out. Refer to Options Section of our Website for details.	Wood louvers not permitted in 20 minute labeled doors. Minimum 5" (127 mm) from stiles or rails. Minimum 1-1/2" (38 mm) from cut-out to cut-out. Refer to Options Section of our Website for details.	Cut-out for lite and louver with size limitations. Refer to Options Section of our Website for details.
Notes	Stile and rail dimensions shown are rough sizes, before trimming. Dimensions will vary due to prefit requirements.	Stile and rail dimensions shown are rough sizes, before trimming. Dimensions will vary due to prefit requirements.	Stile and rail dimensions shown are rough sizes, before trimming. Dimensions will vary due to prefit requirements.	Stile and rail dimensions shown are rough sizes, before trimming. Dimensions will vary due to prefit requirements.	Stile and rail dimensions shown are rough sizes, before trimming. Dimensions will vary due to prefit requirements.
Warranty	Life of original installation. See our complete warranty for details.	Life of original installation. See our complete warranty for details.	Life of original installation. See our complete warranty for details.	Life of original installation. See our complete warranty for details.	Life of original installation. See our complete warranty for details.
Factory finish	UV Finishing System. Stain, clearcoat, opaque and primed finish available. Custom color matching available. Seal top and bottom standard. No VOC.	UV Finishing System. Stain, clearcoat, opaque and primed finish available. Custom color matching available. Seal top and bottom standard. No VOC.	UV Finishing System. Stain, clearcoat, opaque and primed finish available. Custom color matching available. Seal top and bottom standard. No VOC.	UV Finishing System. Stain, clearcoat, opaque and primed finish available. Custom color matching available. Seal top and bottom standard. No VOC.	UV Finishing System. Stain, clearcoat, opaque and primed finish available. Custom color matching available. Seal top and bottom standard. No VOC.
Environmental description	Recycled content (LEED MRc4.1, 4.2). Certified Wood (LEED MRc7). Low Emitting Materials (LEED EQc4.4).	Recycled content (LEED MRc4.1, 4.2). Low Emitting Materials (LEED EQc4.4).	Low Emitting Materials (LEED EQc4.4).	Low Emitting Materials (LEED EQc4.4). Certified Wood (LEED MRc7).	Low Emitting Materials (LEED EQc4.4).



Also available in our 8300 Series

* Fire Proof Composite Material

At Lambton Doors,
we believe in a transformed
built environment
contributing to a
sustainable future.

Our commitment to provide
products that help to reduce
the quantity of indoor air
contaminants has led us
to develop our
EnviroDesign Door Series™
with No Urea Formaldehyde.

Please visit our Website at
www.lambtondoors.com
or contact our Customer Service
Department for more information
on how these products can help you
reach your LEED® Project goals.