



COMMERCIAL AND ARCHITECTURAL
DOOR MANUFACTURER

U.S.A. : 1 800 363.2248
Can. : 1 800 463.3124
info@lambtondoors.com

COMMERCIAL AND ARCHITECTURAL DOORS



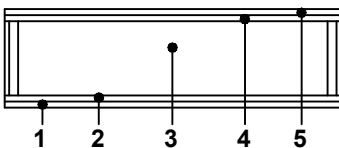
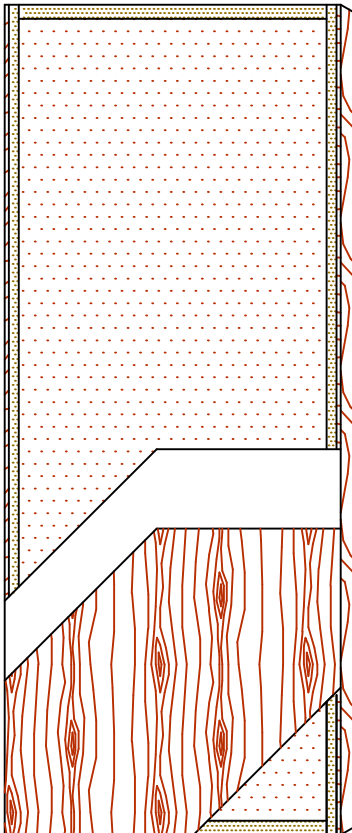
Laminated strand lumber core

FSC Certified

NO UREA FORMALDEHYDE

Compatible edge **5-FSLSL-ECE**

Matching edge **5-FSLSL-EME**



SPECIFICATIONS DESCRIPTION

| | |
|--|---|
| Type | FSC Certified Laminated Strand Lumber Core (interior use). |
| In conformity with industry standards | ARCHITECTURAL WOODWORK STANDARDS-ED. 1 W.D.M.A. SERIES I.S.1-A-2004 ASTM D5456-09 |
| Thickness | 1-3/4" (44 mm). |
| Maximum size | 48" x 120" (1 219 mm x 3 048 mm). |
| Stiles | ECE: 7/16" (11 mm) wood (mill option) laminated to 1" (25 mm) structural composite lumber (SCL). EME: 7/16" (11 mm) hardwood laminated to 1" (25 mm) structural composite lumber (SCL). |
| Rails | 1-7/16" (36 mm) structural composite lumber (SCL). |
| Core | Structural composite lumber (SCL) core with a density of 38 PCF (609 kg/m ³) bonded to the stiles. No added urea formaldehyde resin. FSC Certified. |
| Adhesive | Type I (waterproof); PVA (no urea formaldehyde); VOC<0.683 g/L. |
| Face | Wood veneer, HDF or MDO bonded to a UF free composite crossband. No added urea formaldehyde resin. |
| Options | <ul style="list-style-type: none"> ● 20 minute rating neutral or positive pressure. Refer to Fire Door Section of our Website for details. ● 15/16" (24 mm) wood (mill option) or hardwood laminated to 1" (25 mm) structural composite lumber (SCL). |
| Lite and louver opening | Wood louvers not permitted in 20 minute labeled doors. Minimum 5" (127 mm) from stiles or rails. Minimum 1-1/2" (38 mm) from cut-out to cut-out. Refer to Options Section of our Website for details. |
| Notes | Stile and rail dimensions shown are rough sizes, before trimming. Dimensions will vary due to prefit requirements. |
| Warranty | Life of original installation. See our complete warranty for details. |
| Factory finish | UV Finishing System. Stain, clearcoat, opaque and primed finish available. Custom color matching available. Seal top and bottom standard. No VOC. |

Environmental description Recycled Content (LEED MRc4.1, 4.2).
FSC Certified Wood (LEED MRc7).
Low-Emitting Materials (LEED EQc4.4).



The FSC logo identifies products which contain wood from well-managed forests certified in accordance with the rules of the Forest Stewardship Council.

