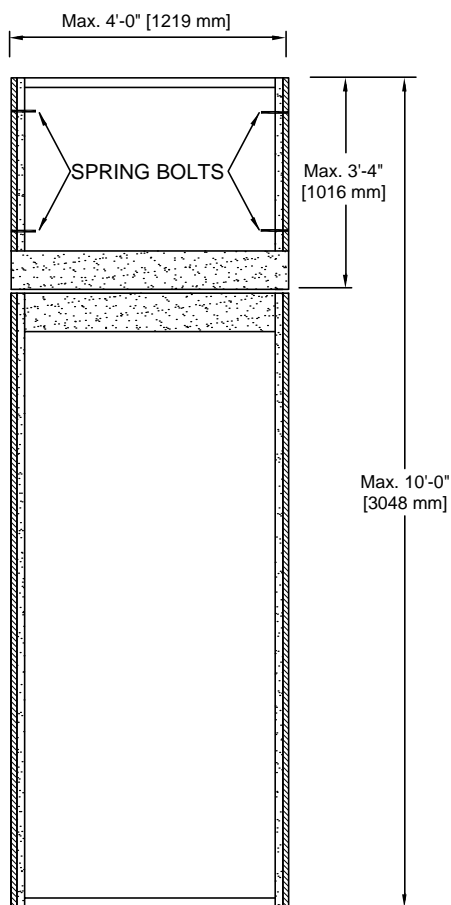




U.S.A. : 1.800.363.2248
 Can. : 1.800.463.3124

FIRE DOOR SYSTEM NEUTRAL PRESSURE

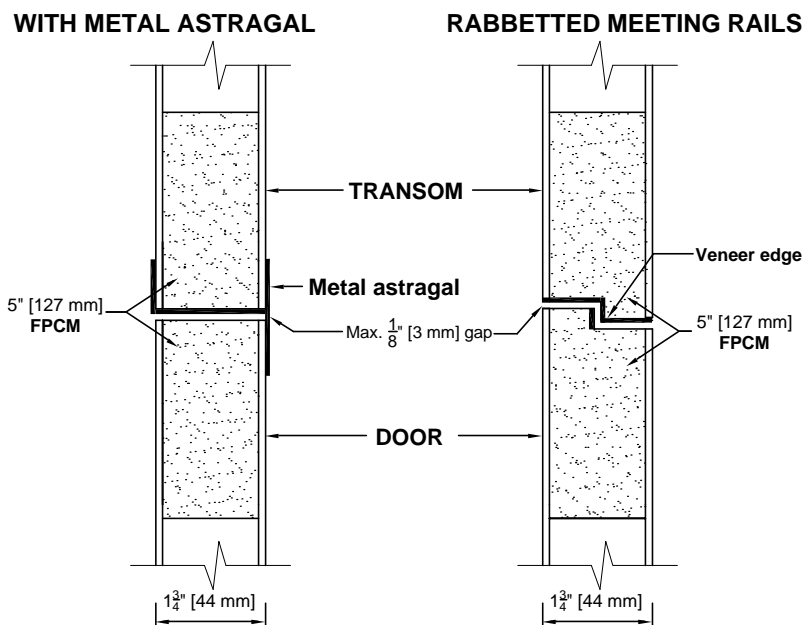
45/60/90 MINUTE DOOR WITH TRANSOM WITH METAL ASTRAGAL OR RABBETTED MEETING RAILS



- Door construction according to series except for meeting rails.
- The maximum opening size is 4'-0" x 10'-0" [1219 mm x 3048 mm].
- The maximum transom size is 4'-0" x 3'-4" [1219 mm x 1016 mm].
- The panel shall be machined for spring bolts.
 The appropriate amount of spring bolts will be provided with the panel.

APPROVED STEEL SPRING BOLTS : "STANLEY #1697"
 Panel up to 18" [457 mm] in height = 2 spring bolts per side.
 Panel up to 36" [914 mm] in height = 3 spring bolts per side.
 Panel up to 40" [1016 mm] in height = 4 spring bolts per side.

SIDE VIEW DETAILS (After trim)



**Code : N45-TR1
 N60/90-TR1**

**Code : N45-TR2
 N60/90-TR2**