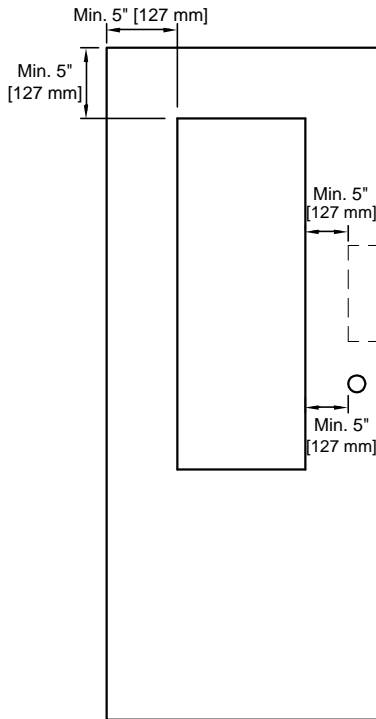


LITE CUT OUT POSITIVE PRESSURE

45 MINUTE (MINERAL CORE)



DOOR INFO

- Max. door size 4'-0" x 9'-0" [1219 mm x 2743 mm].
- Lite cut out to edge of door min. 5" [127 mm].
- Lite cut out to lite cut out min. 5" [127 mm].
- Lite cut out to hardware cut out min. 5" [127 mm].
- Lite cut out to bottom of door :
 - Up to 7'-0" [2134 mm] = 10" [254 mm].
 - Over 7'-0" [2134 mm] = 12" [305 mm].

LITE INFO

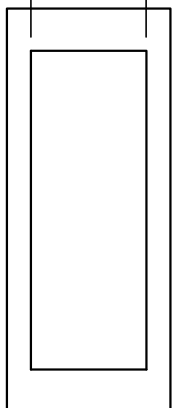
● USING LB7-90 BEADS

- Max. size 1296 sq. in. using Firelite.
- Max. size 100 sq. in. using 1/4" [6 mm] Wire glass.
- Multiple lites available if total does not exceed above mentioned dimensions.

● USING METAL LITE KIT #115

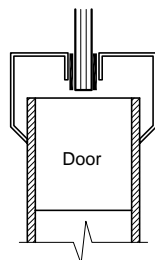
- Max. size 2856 sq. in. using Firelite & Silicon caulk.
- Max. size 2856 sq. in. using 1/4" [6 mm] Wire glass & Pemko FG 3000S45.
- Max. size 1296 sq. in. using 1/4" [6 mm] Wire glass or Firelite only.

Max. 2'-10" [864 mm]



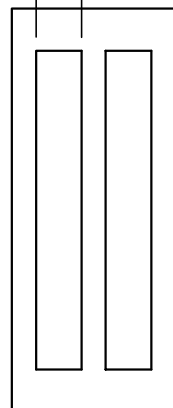
The maximum visible glass area allowed is 2'-10" wide x 7'-0" high or 2856 sq. inches.

Apply FG3000S45 to frame lip as shown



Max. 7'-0" [2134 mm]

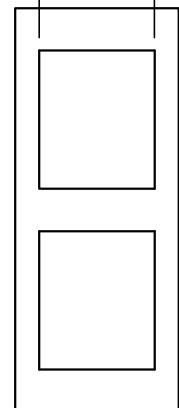
Max. 1'-0" [305 mm]



Doors multiple Vision Lites are allowed, but the combined total visible glass area allowed is 2856 sq. in. per door.

Max. 7'-0" [2134 mm]

Max. 2'-0" [610 mm]



Max. 3'-0" [915 mm]