

IMPORTANT NOTICE

**WARRANTY WILL BE HONORED ONLY IF THE JAMBS HAVE BEEN INSTALLED
IN ACCORDANCE TO THESE INSTALLATION INSTRUCTIONS**

GENERAL INFORMATION

Note

- Wood wedges (supplied by others) may be used in the installation procedures. Therefore, only the term "wedge" will be mentioned.
- Any type of non flammable silicone caulking or quick setting compound (supplied by others) may be used where caulking is mentioned (see figure #4).
- You may install any solid wood or veneer covered M.D.F. no smaller than 1/2" thick by 2" wide (1,27 cm x 5,08 cm) as a casing.
- To avoid damaging your jamb, all screw holes should be pre-drilled for #8 screws using a 3/32" (0,24 cm) drill bit. Holes which are from 65–70% of the diameter of the screw are best.

Wall requirements

- Walls framed with wood or metal studs or masonry construction.
- Framing: wood of a nominal dimension of 2" x 4" (5,08 cm x 10,16 cm) or a steel frame 25 ga. of at least 2-1/2" (6,35 cm).
- Minimum thickness: Slim Type 4-5/8" (11,7 cm), Standard Type 5" (12,7 cm).

Types	TJ/00-20 45-60-90 RJ/00-20 45-60-90 SJ-00	SJC-00	CFJ-00	CFJ-60 CFRJ-60	TJS/45 60-90 RJS/45 60-90
Rough Opening Dimensions	Width + 2-3/4" (70 mm) Height + 1-3/8" (35 mm)	Width + 2-1/2" (64 mm) Height + 1-1/4" (32 mm)	Width + 3-1/2" (89 mm) Height + 1-3/4" (44 mm)	Width + 3-3/4" (95 mm) Height + 1-7/8" (48 mm)	Width + 2" (51 mm) Height + 1" (25 mm)

Note

- All dimensions of the components are rough dimensions.
- For masonry walls, a minimum 2" x 3" (5,08 cm x 7,62 cm) frame should be fixed to the wall using expanding masonry anchors of at least 3/8" (0,95 cm) with a maximum of 26" (66,04 cm) center to center.

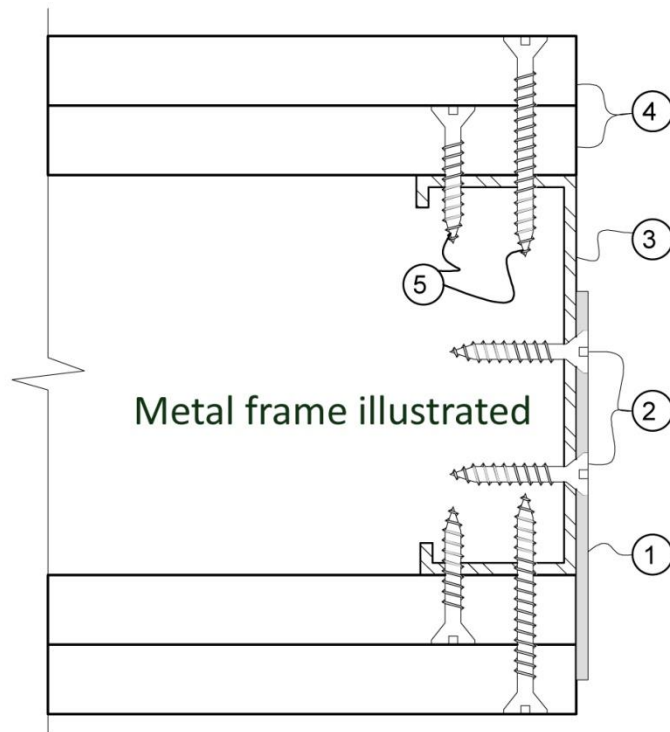
PREPARATION OF THE ROUGH OPENING

Steel plates 2" wide by 12" long (5,08 cm x 30,48 cm) 20 ga. are needed but not included for 90 minute certified wood jambs. Steel plates are optional for 45 and 60 minutes certified wood jambs. These plates will be used as supplementary anchoring for the hinges and the strike on the jamb uprights and header if required. The plates should be centered on the height of each hinge as well as the strike with at least 1" (2,54 cm) exceeding past each extremity. Attach each plate to the rough framing with 3 suitable anchors spaced about 5" (12,7 cm) apart: use #6 screws 3/8" (0,95 cm) long for steel frames; for wood frames, use 1" (2,54 cm) long drywall screws. See figure #1.

Figure #1

Attach metal plates to the rough framing

- ① 1 metal plate
(supplied by others)
2" x 12" (5,08 cm x 30,48 cm)
20 ga. per hinge and strike
- ② #6 screws,
3/8" (0,95 cm) long,
minimum 3 per metal plate,
for wood use 1" (2,54 cm)
long drywall screws
- ③ 2-1/2" (6,35 cm)
metal framing 25 ga.
- ④ 5/8" (1,59 cm) drywall panels
- ⑤ Drywall screws



If needed, you may remove up to 3/4" (1,91 cm) from the base of each jamb upright during the installation of the jamb in the opening. Be sure that you do not have to reduce or remove any material from the bottom of the door itself. Some doors may not be trimmed from the bottom.

JAMB ASSEMBLY

Line up the header with the jamb uprights. Insert 2 x 8 screws 2-1/4" (5,72 cm) long through the pre-drilled holes at the top of each jamb upright. See figure #2.

Figure #2a

Certified Jamb Assembly Details

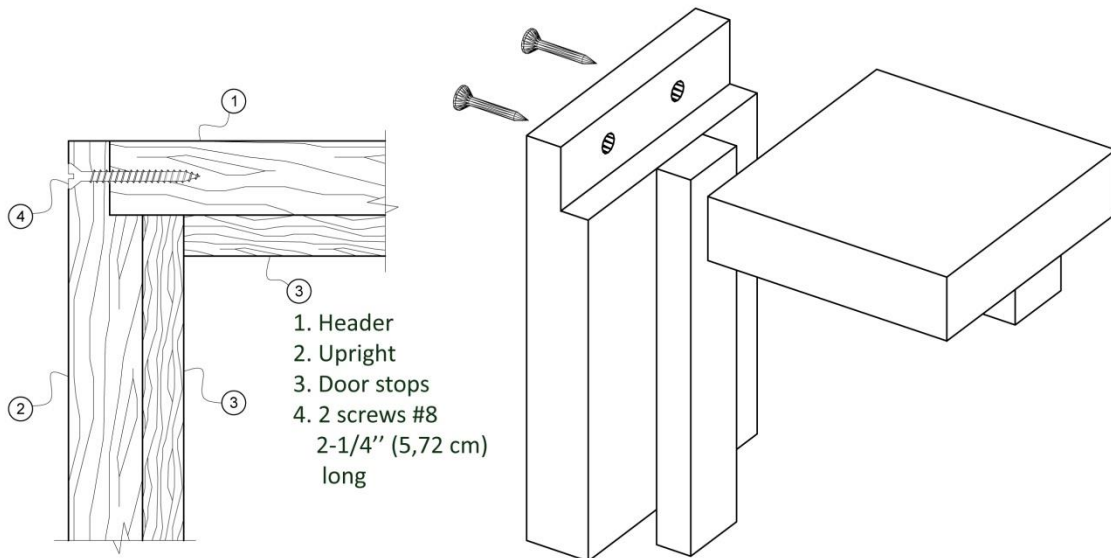
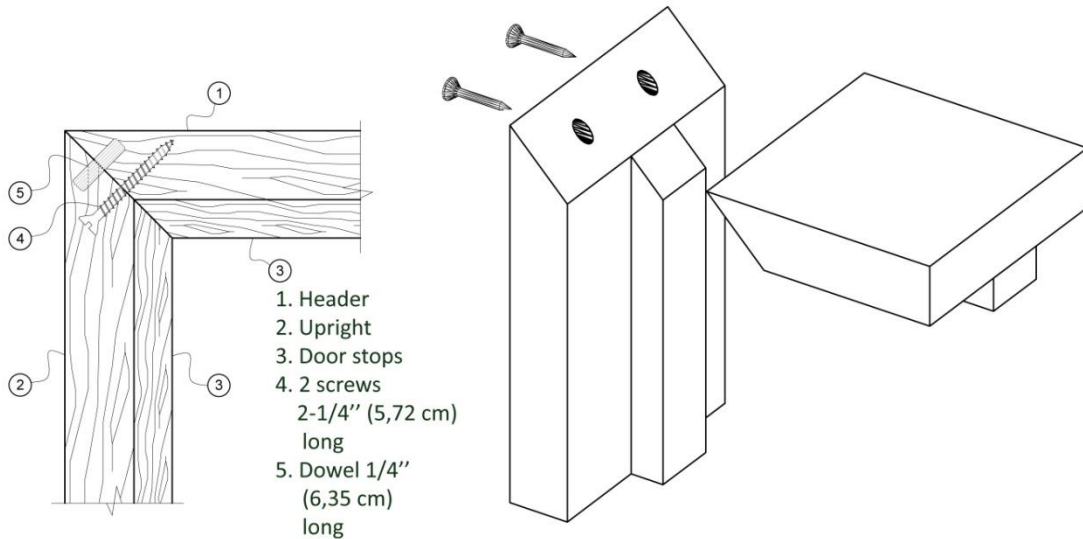


Figure #2b

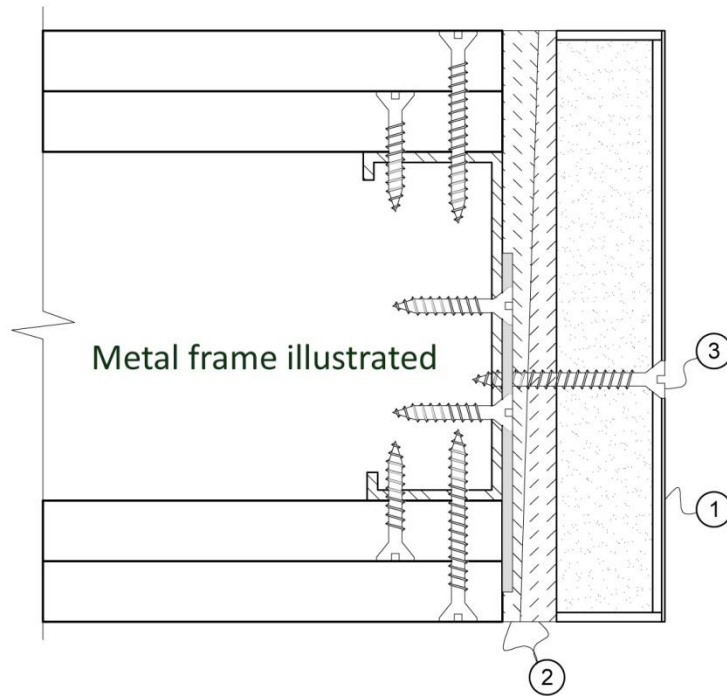
Certified Jamb Assembly Details, Miter Joint (45°)



Align and square the assembled door jamb inside the rough opening of the wall. Install the wedges approximately 2" (5,08 cm) from the top and bottom of each hinges to fill the space between the upright and the wall. Fix upright with #8 screws 2-1/4" (5,72 cm) long, 2-1/2" (6,35 cm) from the edge in such a manner the screws to be hidden by the door stop once installed, and centered on the height of the wedges. After, do the same to the other upright. Ensure that the header and uprights are plumb and square. See figure #3.

Figure #3
Installing the wedges and
fixing the uprights to the
rough opening

- ① Certified jamb
- ② Wedges installed at hinge heights on each side of the jamb
- ③ #8 screws 2-1/4" (5,72 cm) on each wedge



INSTALLING THE DOOR IN THE FRAME

Hang the door in the jamb using only the top and bottom hinges. Close the door to verify and adjust the alignment of the door stops and to make sure that the maximum space between the door and the jamb is 1/8" (0,32 cm) both between the header and the uprights. In the case of paired doors, the same 1/8" (0,32 cm) space should be between the doors. Once the alignment is completed install the wedges with a maximum of 26" (66,04 cm) on centers, between the wall and the uprights as well as the header. Screw in and tighten #8 screws 2-1/4" long (5,72 cm) through the uprights into the wall centered on the wedges; and through the header into the wall centered on the wedges if they were needed. Check the opening again and adjust as needed. Install the remaining hinges with the screws supplied, except for one 2-1/4" (5,72 cm) #10 screw that will be screwed through the 2" x 12" (5,08 cm x 30,48 cm) steel plate that you have previously set in place.

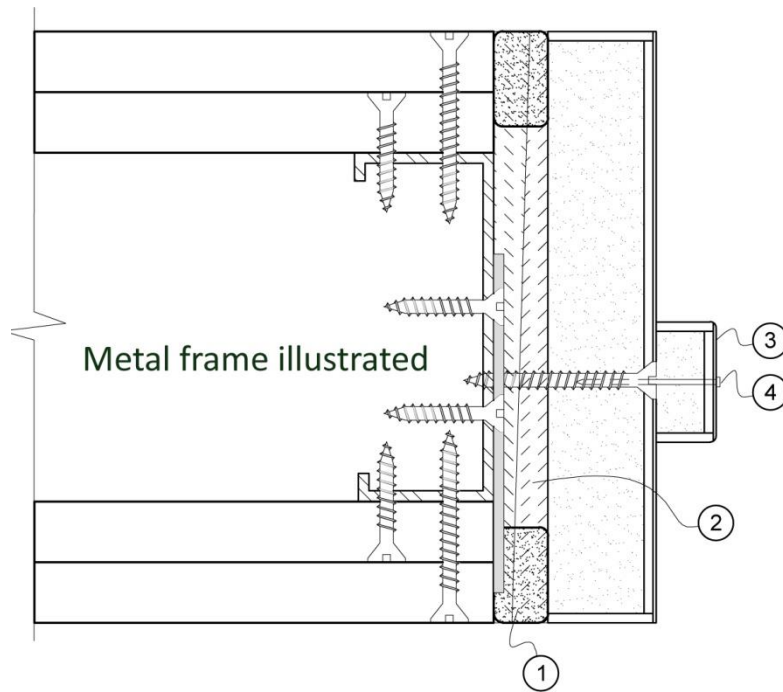
Door stops, supplied loose, must be installed with 1-1/2" (3,81 cm) spiral finishing nails on 12" (30,48 cm) centers.

FINISHING TOUCHES

Check and adjust the hardware to insure that the door(s) close and latch automatically. Remove the excess wedge material on each side of the door jamb either by breaking or sawing them. Apply the caulking in such a manner as to fill in the spaces between the jamb and the wall to a depth of at least 1" (2,54 cm). See figure #4. This can be accomplished with trowels or with a tube of caulking and a pistol grip caulking dispenser. For masonry walls, smooth the caulking between the jamb and the wall.

Figure #4
Install the door stop
and apply the caulking

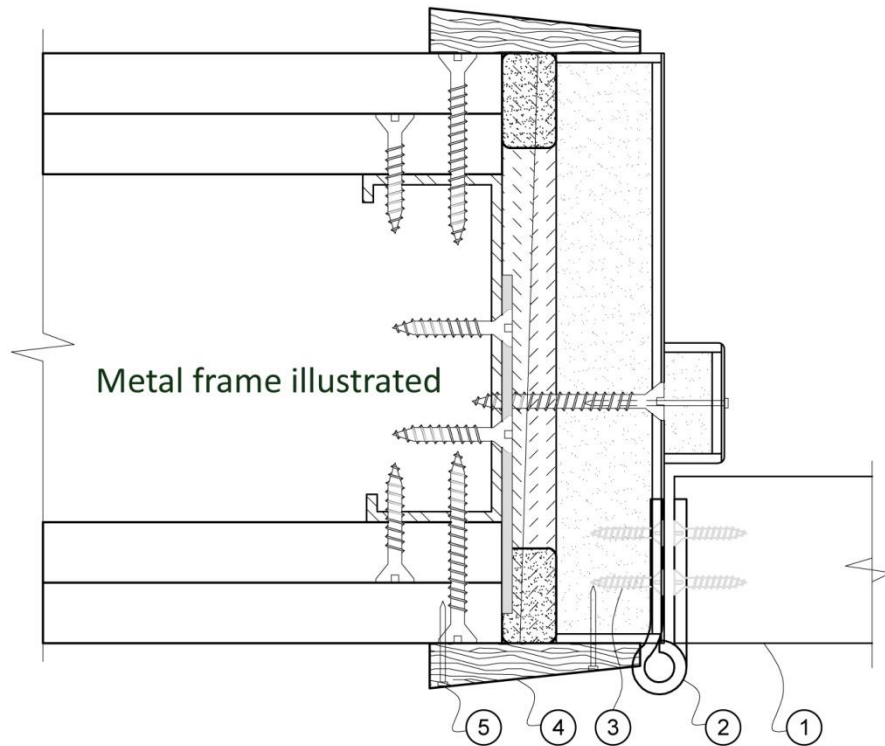
- ① At least 1" (2,54 cm) of caulking between the wedges (supplied by others)
- ② Wedges
- ③ Door stop
- ④ Spiral finishing nail, 1-1/2" (3,81 cm) long, on 12" (30,48 cm) centers



After the caulking material has hardened, install the casing to cover the spaces between the jamb uprights, header and the walls with finishing nails on a maximum 24" (60,96 cm) centers. See figure #5. The nails should be of a length that gives a penetration into the frame of at 1/2" (1,27 cm).

Figure #5
Install the door
in the jamb

- ① Certified fireproof door
- ② Steel hinges 4" x 4-1/2" x 0.134" (10,16 cm x 11,43 cm x 0,34 cm)
- ③ #10 screw, 2-1/4" (5,72 cm) long, at each hinge and strike
- ④ Casing, either solid wood or veneer covered MDF
- ⑤ Finishing nail



THIS DOCUMENT IS ALSO AVAILABLE ON OUR WEBSITE
WWW.LAMBTONDOORS.COM
UNDER TECHNICAL SPACE