

IMPORTANT NOTICE

**WARRANTY WILL BE HONORED ONLY IF THE JAMBS HAVE BEEN INSTALLED
IN ACCORDANCE WITH THESE INSTALLATION INSTRUCTIONS**

GENERAL INFORMATION

Note

- Wood wedges (supplied by others) may be used in the installation procedures. Therefore, only the term "wedge" will be mentioned in this document.
- You may install any solid wood or veneer covered M.D.F as a casing (supplied by others).
- To avoid damaging your jamb, all screw holes should be pre-drilled for #8 screws using a 3/32" (0,24 mm) drill bit. Holes which are from 65–70% of the diameter of the screw are best.

Wall requirements

- Walls framed with wood or metal studs or masonry construction.
- Framing: wood of a nominal dimension of 2" x 4" (5,08 cm x 10,16 cm) or a steel frame (25 ga.) of at least 2-1/2" (6,35 cm).
- Minimum width : 3-5/8" (921 mm).

Jamb Types	TJ/00-20 45-60-90 RJ/00-20 45-60-90 SJ-00	SJC-00	CFJ-00	CFJ-60 CFRJ-60	TJS/45 60-90 RJS/45 60-90
Rough Opening Dimensions	Width + 2-3/4" (70 mm) Heigh + 1-3/8" (35 mm)	Width + 2-1/2" (64 mm) Heigh + 1-1/4" (32 mm)	Width + 3-1/2" (89 mm) Heigh + 1-3/4" (44 mm)	Width + 3-3/4" (95 mm) Heigh + 1-7/8" (48 mm)	Width + 2" (51 mm) Heigh + 1" (25 mm)

- **For single or pair doors**

Examples

After finished floor.

Width: Interior opening of the frame + 2-3/4" (70 mm)

Height: Interior opening of the frame + 1-3/8" (35 mm)

For a 36" x 84" interior opening (914 mm x 2 134 mm) rough opening should be:

Width: 36" x 2-3/4" = 38-3/4" (984 mm)

Height: 84" + 1-3/8" = 85-3/8" (2 169 mm)

JAMB ASSEMBLY

Line up the header with the jamb uprights. Insert 2 #8 screws 2-1/4" (5,72 cm) long through the pre-drilled holes at the top of each jamb upright. See figure #1A.

Figure #1A
Jamb Assembly Details

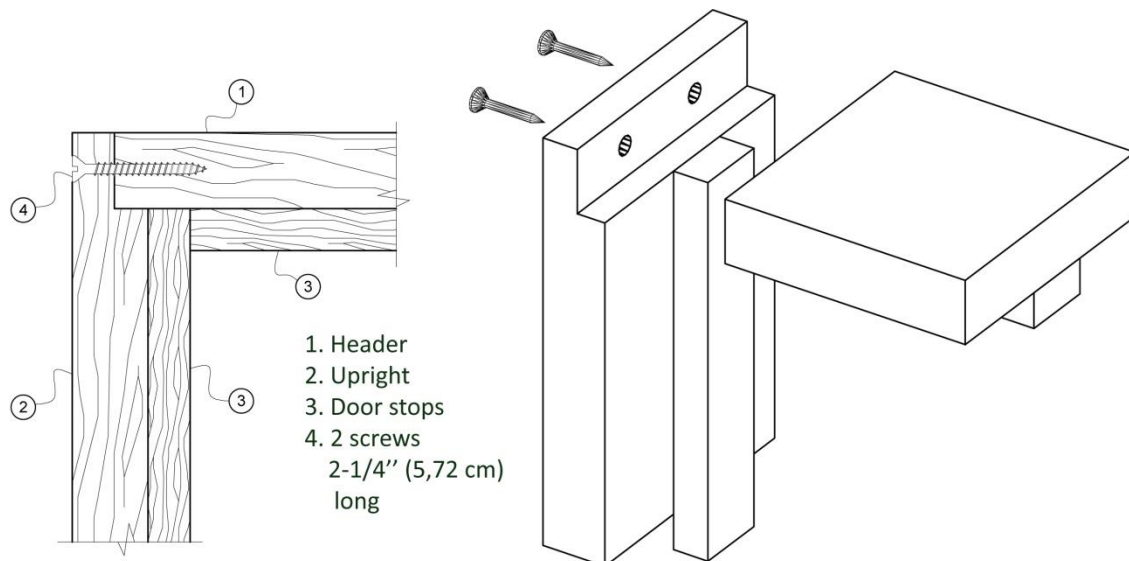
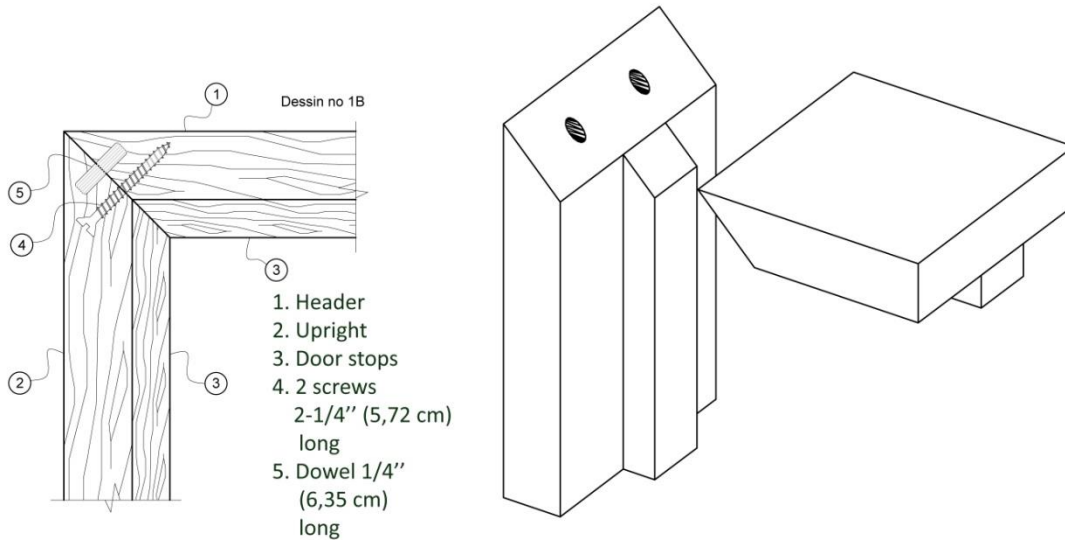


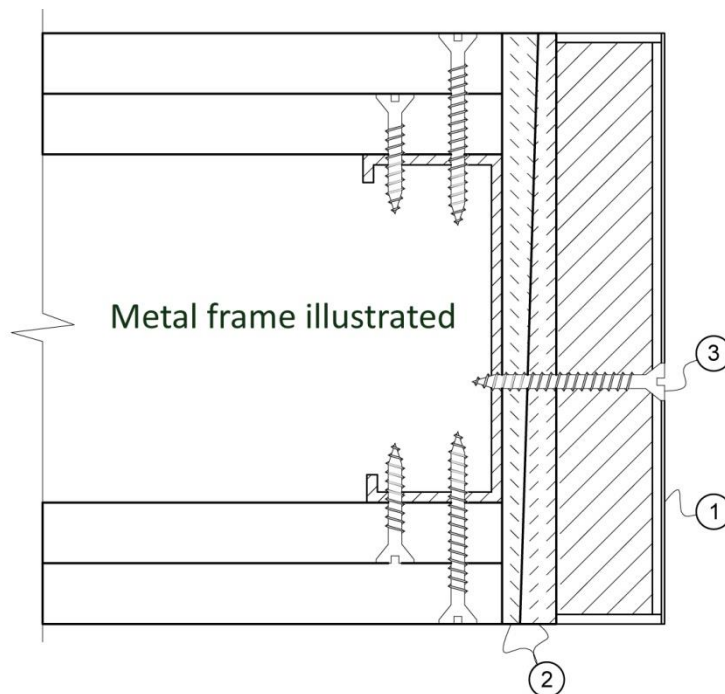
Figure #1B
Jamb Assembly Details, Miter Joint (45°)



Align and square the assembled door jamb inside the rough opening of the wall. Install the wedges approximately 2" (5,08 cm) from the top and bottom of each hinges to fill the space between the upright and the wall. Fix upright with #8 screws 2-1/4" (5,72 cm) long, 2-1/2" (6,35 cm) from the edge in such a manner to be hidden by the door stop once installed, and centered on the height of the wedges. After, do the same to the other upright. Ensure that the header and uprights are plumb and square. See figure #2.

Figure #2
**Installing the wedges
 and fixing the uprights
 to the rough opening**

- ① Jamb
- ② Wedges installed
each side of the jamb
- ③ #8 screws
2-1/4" (5,72 cm) long,
centered on wedge height
and 2-1/2" (6,35 cm)
from edge on hinge side



INSTALLING THE DOOR IN THE FRAME

Hang the door in the jamb using only the top and bottom hinges. Close the door to verify and adjust the alignment of the door stops and to make sure that the maximum space between the door and the jamb is 1/8" (0,32 cm) both between the header and the uprights. In the case of paired doors, the same 1/8" (0,32 cm) space should be between the doors. Once the alignment is completed, install the wedges, with a maximum of 26" (66,04 cm) on centers, between the wall and the uprights as well as the header. Screw in and tighten #8 screws 2-1/4" long (5,72 cm) through the uprights into the wall centered on the wedges; and through the header into the wall centered on the wedges. Check the opening again and adjust as needed. Install the remaining hinges with the screws supplied, except for one 2-1/4" (5,72 cm) #10 screw that will be screwed through the 2" x 12" (5,08 cm x 30,48 cm) steel plate that you have previously set in place.

Door stops, supplied loose, must be installed with 1-1/2" (3,81 cm) spiral finishing nails on 12" (30,48 cm) centers.

FINISHING

Check and adjust the hardware to insure that the door closes and latches automatically. Remove the excess wedge material on each side of the door jamb either by breaking or sawing them.

Figure #3
Install the door stop

- ① Wedges
- ② Door stop
- ③ Spiral finishing nails, 1-1/2" (3,81 cm) long, on 12" (30,48 cm) centers

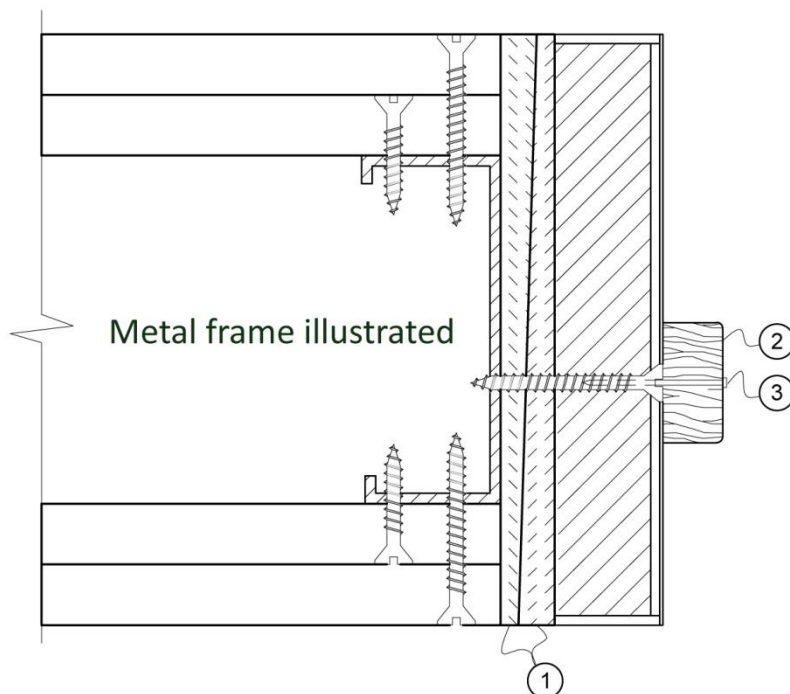
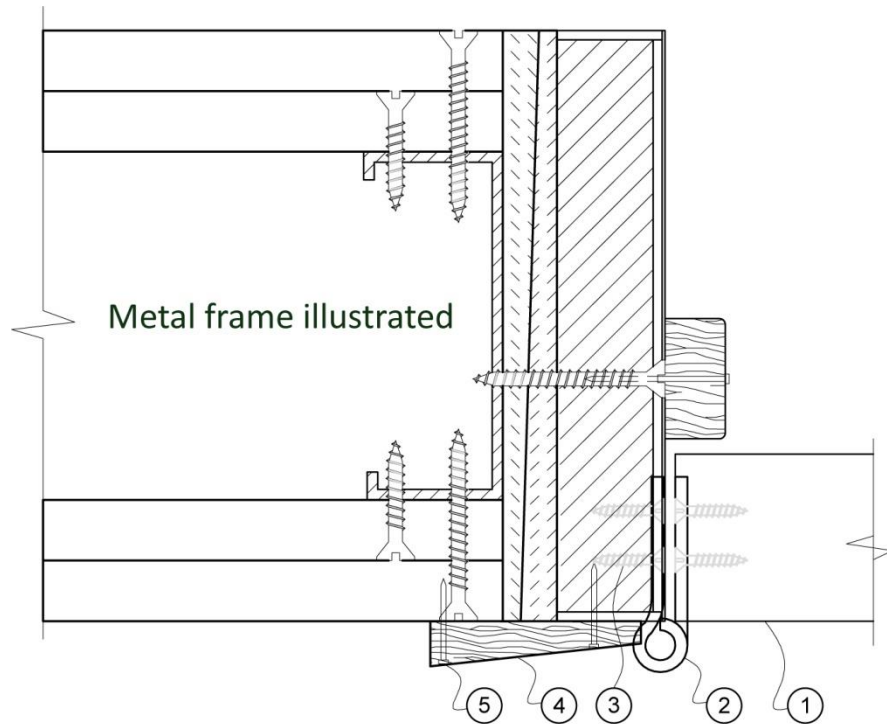


Figure #4
Install the door
in the frame

- ① Door
- ② Steel hinges
4" x 4-1/2" x 0.134"
(10,16 x 11,43
x 0,34 cm)
- ③ #10 screw
2-1/4" (5,72 cm) long,
at each hinge and
strike
- ④ Casing
either solid wood or
veneer covered MDF
- ⑤ Finishing nail



THIS DOCUMENT IS ALSO AVAILABLE ON OUR WEBSITE
WWW.LAMBTONDOORS.COM
UNDER TECHNICAL SPACE