

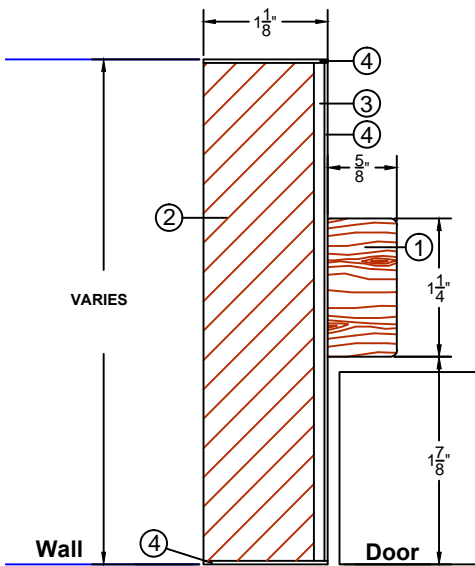


COMMERCIAL AND ARCHITECTURAL
DOOR MANUFACTURER

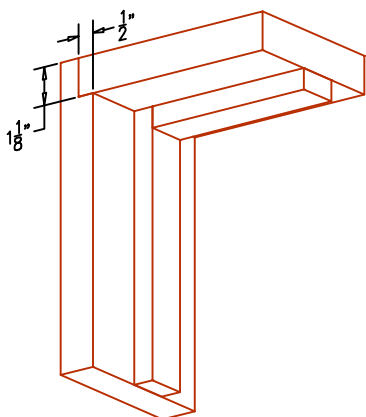
U.S.A. : 1 800 363.2248
Can. : 1 800 463.3124
info@lambtondoors.com

COMMERCIAL AND ARCHITECTURAL JAMBS

Lambton 20 minute jamb T Jamb TJ-20



- ① Wood
- ② Structural Composite Lumber (SCL)
- ③ Crossband
- ④ Veneer



SPECIFICATIONS DESCRIPTION

Wall thickness	Minimum 3-3/4" (95 mm) Rated wall as per code requirements
Wood casing	Standard profiles available. Min 5/16" x 1-5/8" (8mm x 41mm).
Conforms to	Conforms for use with Positive and Neutral Pressure firedoors.
Maximum opening	Single: 48" x 108" (1 219 mm x 2 743 mm) Pair: 96" x 108" (2 438 mm x 2 743 mm)
Assembly	<ul style="list-style-type: none"> ● Dado's pre-drilled and countersunk for #8 wood screw. Screws supplied by others. ● Rabbet assembly. Miter assembly (45°) also available.
Shipping	Knock down
Wrapping	Bundle wrapped
Suggested rough opening dimensions	For single or pair doors After Finished Floor Width : Interior opening of frame + 2-3/4" (70 mm) Height : Interior opening of frame + 1-3/8" (35 mm) Ex. For a 36" x 84" interior opening (914 x 2 134 mm), <u>rough opening should be :</u> Width : 36" + 2-3/4" = 38-3/4" (984 mm) Height : 84" + 1-3/8" = 85-3/8" (2 169 mm)
Notes	<ul style="list-style-type: none"> ● Dimensions on drawing are finished size ● Refer to <i>Technical Space</i> of our Website for Installation instructions ● UF free ● Available FSC Certified
Warranty	Life of original installation. See our complete warranty for details.
Factory finish	UV Finishing System. Stain, clearcoat, opaque and primed finish available. Custom color matching available. No VOC.
Environmental description	Low Emitting Materials (LEED EQc4.1, EQc4.2, EQc4.4). FSC Certified Wood (LEED MRC7). Available on request.

INFORMATION www.lambtondoors.com

