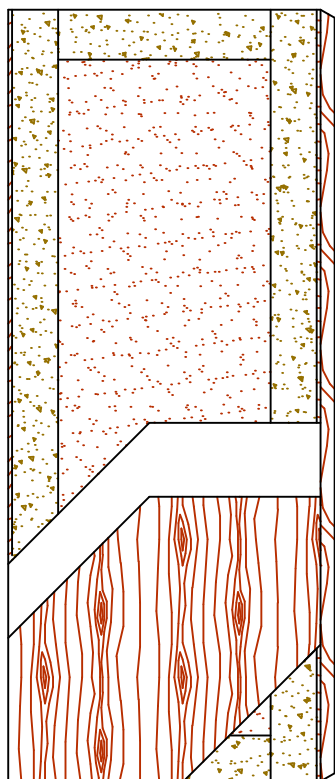


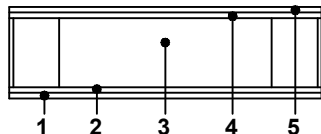


COMMERCIAL AND ARCHITECTURAL
DOOR MANUFACTURER

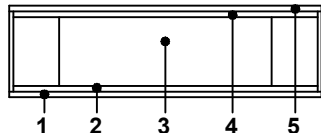
U.S.A. : 1 800 363.2248
Can. : 1 800 463.3124
info@lambtonddoors.com



ECE/EME



EBE



COMMERCIAL AND ARCHITECTURAL DOORS

Acoustical Door

NO UREA FORMALDEHYDE

Compatible edge **5-STC3590-ECE**
Matching edge **5-STC3590-EME**
Blind edge **5-STC3590-EBE**



SPECIFICATIONS DESCRIPTION

Type	Sound dampening core (interior use).
In conformity with industry standards	ARCHITECTURAL WOODWORK STANDARDS-ED.1 WDMA Series I.S.1-A-2011 ASTM E413-04 ASTM E2235-04
Thickness	1-3/4" (44 mm).
Maximum size	48" x 120" (1 219 mm x 3 048 mm).
Stiles	ECE: 7/16" (11 mm) wood (mill option) laminated to 5" (127 mm) proprietary material (FPCM)* EME / EBE: 7/16" (11 mm) hardwood laminated to 5" (127 mm) proprietary material (FPCM)*.
Rails	Top: 5" (127 mm) of proprietary material (FPCM)*. Bottom: 5" (127 mm) of proprietary material (FPCM)*.
Core	Proprietary material.
Adhesive	Type I, fully waterproof; PVA (no urea formaldehyde); VOC<0.683 g/L.
Face	Wood veneer or MDO bonded to a UF free composite crossband. No added urea formaldehyde resin.
Acoustical rating	STC35 For pair and transom, the STC rating will be affected.
Lite opening	Limited to 1 296 po ² (0,836 m ²). Will affect STC rating.
Notes	<ul style="list-style-type: none"> Doors tested using double S88BL Silicone TM gasket, 434ARL drop seal, 2005AT threshold and 3 standard hinges. The use of hardware other than those tested will affect STC rating. Stile and rail dimensions shown are rough sizes, before trimming. Dimensions will vary depending on the hardware. For pairs and transom, Lambton Doors will provide a #212 listed astragal with S88BL Silicone TM gasket. Available up to 90 minute fire rated door. Heavy duty hinges may be used. Weight : 7.6 lbs/sq. ft. (37.1 kg/sq. m.). Available up to 90 minute fire rating in positive and neutral pressure. In positive pressure maximum height 108" and neutral pressure maximum height 120". Refer to Technical Space of our Website for details.

Warranty	Life of original installation. See our complete warranty for details.
Factory finish	UV Finishing System. Stain, clearcoat, opaque and primed finish available. Custom color matching available. Seal top and bottom standard. No VOC.
Environmental description	Recycled content (LEED MRc4.1, 4.2). Low Emitting Materials (LEED EQc4.4). FSC Certified Wood available on request (LEED MRc7).

* Fire Proof Composite Material

INFORMATION

www.lambtonddoors.com

Printed in Canada 2014/03