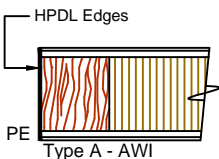
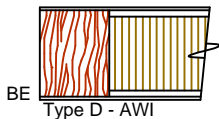
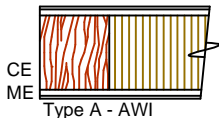
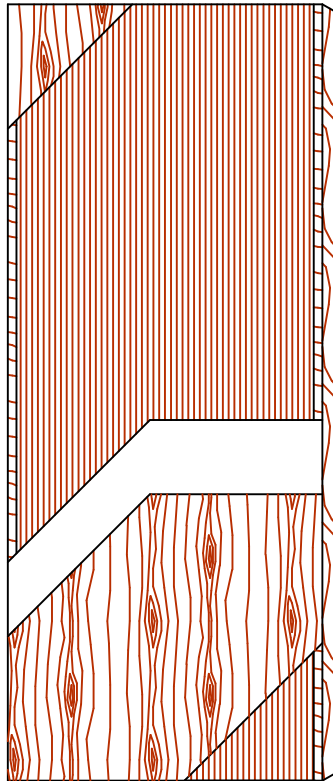




COMMERCIAL AND ARCHITECTURAL
DOOR MANUFACTURER

U.S.A. : 1 800 363.2248
Can. : 1 800 463.3124
info@lambtondoors.com
www.lambtondoors.com



The FSC logo identifies products which contain wood from well-managed forests certified in accordance with the rules of the Forest Stewardship Council.



COMMERCIAL AND ARCHITECTURAL DOORS

Laminated Veneer Lumber Core (LVL)

Standard Series
EnviroDesign™ Series



5-LVL-CE/ME/BE
5-UFLVL-ECE/EME/EBE
5-FSLVL-ECE/EME/EBE

SPECIFICATIONS DESCRIPTIONS

| | |
|--|--|
| Type | Laminated Veneer Lumber Core (interior use). |
| In Conformity with Industry Standards | ARCHITECTURAL WOODWORK STANDARDS-ED. 2 W.D.M.A. SERIES I.S.1-A-2013 CSA 0132.2 SERIES 90 ASTM D5456-09 |
| Thicknesses | 1-3/4" (44 mm). |
| Maximum Sizes | 48" x 120" (1 219 mm x 3 048 mm). |
| Stiles | CE (Compatible Edge): 15/16" (24 mm) wood (mill option). ME (Matching Edge): 15/16" (24 mm) hardwood. BE (Blind Edge): 15/16" (24 mm) hardwood. |
| Core | Piece of laminated wood veneer strips of 1/8" (3 mm) each. These strips are longitudinally laminated by hot pressing (LVL). |
| Adhesive | Type I (waterproof); PVA (UF-Free); VOC<0.683 g/L. |
| Face | Wood veneer, MDO or HPDL laminated to a HDF. |
| Options | UF-Free faces. PE (Plastic Edge): HPDL edges. Lambton Doors' EDGEFENDER : High impact resistant edges. |
| Lite and Louver Openings | Minimum 5" (127 mm) from stiles or rails. Minimum 1-1/2" (38 mm) from cut-out to cut-out. |
| Notes | Stile and rail dimensions shown are rough sizes, before trimming. |
| Warranty | Life of original installation. |
| Factory Finish | UV Finishing System 9 by AWI. Stain, clearcoat, opaque and primed finish available. Custom color matching available. No VOC. Sealed top and bottom standard. Lambton Doors' ASEPTI : Antimicrobial coated surface in option. |
| LEED® Credits | Mrc4.1 : Recycled content. All Series. Mrc5 : Regional Materials. According to job site location. Mrc7 : FSC Certified Wood. Specify 5-FSLVL. IEQ 4.4 : Low Emitting Materials, UF-Free. Specify 5-UFLVL. |



Printed in Canada 2015/12