



COMMERCIAL AND ARCHITECTURAL
DOOR MANUFACTURER

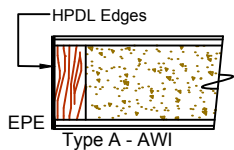
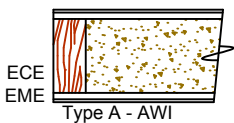
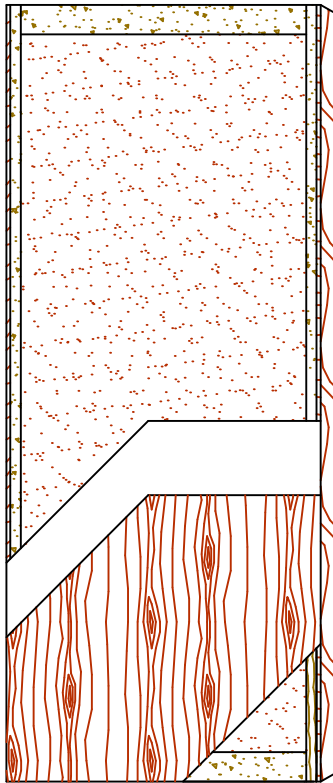
U.S.A. : 1 800 363.2248
Can. : 1 800 463.3124
info@lambtondoors.com
www.lambtondoors.com

COMMERCIAL AND ARCHITECTURAL DOORS




Acoustical Door
45 minute Fire-Rated
NO UREA FORMALDEHYDE

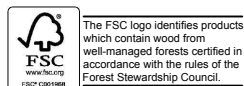
Compatible edge **5-STC4545-ECE**
Matching edge **5-STC4545-EME**



SPECIFICATIONS DESCRIPTIONS

Type	Sound dampening core (interior use).
In conformity with industry standards	ARCHITECTURAL WOODWORK STANDARDS-ED.2 WDMA Series I.S.1-A-2013 ASTM E90-04 ASTM E413-04 ASTM E1332-90 ASTM E2235-04 C.S.A. 0132.2 Serie 90
Thickness	1-3/4" (44 mm).
Maximum size	36" x 84" (914 mm x 2 134 mm). Single door only.
Stiles	ECE (Compatible Edge): 7/16" (11 mm) wood (mill option). EME (Matching Edge): 7/16" (11 mm) hardwood. Laminated to 1-1/8" (29 mm) of proprietary material (FPCM)*.
Rails	Top: 3-3/16" (81 mm) of proprietary material (FPCM)*. Bottom: 3-3/16" (81 mm) of proprietary material (FPCM)*.
Core	Proprietary material.
Adhesive	Type I, fully waterproof; PVA (no urea formaldehyde); VOC<0.683 g/L.
Face	Wood veneer or MDO bonded to a UF free composite crossband. No added urea formaldehyde resin.
Acoustical rating	STC45
Lite opening	Maximum dimension tested 216 Sq. in. (0,139 Sq. m.). Opening up to 864 Sq. in. (0,557 Sq. m.) available.
Notes	<ul style="list-style-type: none"> Doors tested using S773, S44 & ACP 112 gasket, PDB411AE drop seal, acoustic corner pad ACP 112 and 3 heavy duty hinges. The use of hardware other than those tested will affect STC rating. Stile and rail dimensions shown are rough sizes, before trimming. Dimensions will vary depending on the hardware. Heavy duty hinges may be used. Weight : 12 lbs/sq. ft. (58 kg/sq. m.). Available 45 minute fire-rated in positive and neutral pressure. Refer to Technical Space of our Website for details.
Options	EPE (Plastic Edge): HPDL edge. Lambton Doors' EDGEFENDER : High impact resistant edges.
Warranty	Life of original installation. See our complete warranty for details.
Factory finish	UV Finishing System 9 by AWI. Stain, clearcoat, opaque and primed finish available. No VOC. Custom color matching available. Sealed top and bottom standard. Lambton Doors' ASEPTI : Antimicrobial coated surface in option.
LEED® Credits	<p> MRC4.1: Recycled content. MRC7: FSC Certified Wood. Available on request. IEQ 4.4: Low Emitting Materials, UF-Free.</p>

* Fire Proof Composite Material



Printed in Canada 2016/04