

COMMERCIAL AND ARCHITECTURAL DOORS

Fire Door System Mineral core door 45 minute

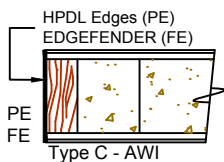
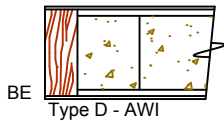
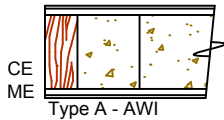
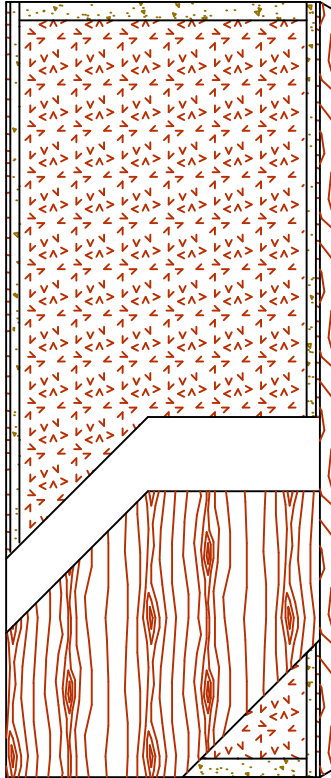
Standard Series

5-FD45-CE/ME/BE

EnviroDesign™ Series

5-FD45-ECE/EME/EBE

EnviroDesign
SERIES NO UF



SPECIFICATIONS DESCRIPTIONS

Type	Mineral core (interior use).
In conformity with industry standards	ARCHITECTURAL WOODWORK STANDARDS-ED.2 W.D.M.A. SERIES I.S.1-A-2013
Fire rating details	45 minutes neutral or positive pressure Refer to Fire-Rated Options of our Architectural Catalog (e-version) CAN/ULC-S104 NFPA 252 UL 10B neutral pressure UL 10C positive pressure category B UL 10C positive pressure category A in option
Thicknesses	1-3/4" (44 mm) to 2-1/4" (57 mm).
Maximum sizes	Positive pressure : 48" x 108" (1 219 mm x 2 743 mm). Neutral pressure : 48" x 120" (1 219 mm x 3 048 mm).
Stiles	CE (Compatible Edge): 7/16" (11 mm) wood (mill option). ME (Matching Edge): 7/16" (11 mm) hardwood. BE (Blind Edge): 7/16" (11 mm) hardwood. Laminated to 1" (25 mm) (FPCM)*. PE (Plastic Edge): HPDL edges. FE : Lambton Doors' EDGEFENDER : High impact resistant edges.
Rails	2" (51 mm) proprietary material (FPCM)*.
Core	Non-combustible mineral core bonded to the stiles and rails.
Adhesive	Type I (waterproof); PVA (UF-Free).
Face	Wood veneer, MDO or HPDL laminated to a HDF.
Options	Blocking for hardware.
Lite and louver openings	Cut-out for lite and louver with size limitations.
Notes	Stile and rail dimensions shown are rough sizes, before trimming. Dimensions will vary due to prefit requirements.
Warranty	Life of original installation.
Factory finish	UV Finishing System 9 by AWI. Stain, clearcoat, opaque and primed finish available. Custom color matching available. Sealed top and bottom standard. Lambton Doors' ASEPTI : Antimicrobial coated surface in option.
Environmental Benefits	Recycled content. All Series. FSC Certified Wood. Specify FSC . Low Emitting Materials NAF . Specify NAF .
Door weight	Thickness 1-3/4" (44mm) = 5,8 lb/ft ² .

* FPCM: Fire Proof Composite Material

Printed in Canada 2017/06



The mark of responsible forestry

The FSC logo identifies products which contain wood from well-managed forests certified in accordance with the rules of the Forest Stewardship Council.

