

# COMMERCIAL AND ARCHITECTURAL DOORS

## Fire Door System

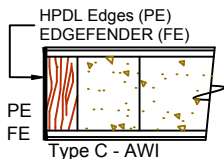
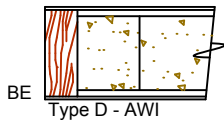
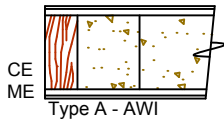
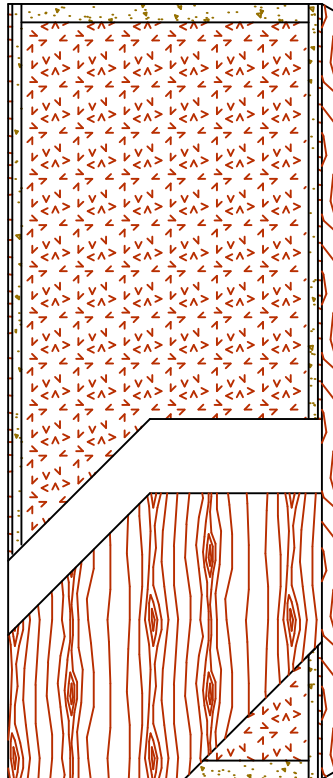
### Mineral core door 60 and 90 minute

Standard Series

5-FD60/90-CE/ME/BE

EnviroDesign™ Series

5-FD60/90-ECE/EME/EBE



## SPECIFICATIONS DESCRIPTIONS

<b>Type</b>	Mineral core (interior use).
<b>In conformity with industry standards</b>	ARCHITECTURAL WOODWORK STANDARDS-ED.2 W.D.M.A SERIES I.S.1-A-2013
<b>Fire rating details</b>	60/90 minutes neutral or positive pressure Refer to Fire-Rated Options of our Architectural Catalog (e-version) CAN/ULC-S104 NFPA 252 UL 10B neutral pressure UL 10C positive pressure category B UL 10C positive pressure category A in option
<b>Thicknesses</b>	1-3/4" (44 mm) to 2-1/4" (57 mm).
<b>Maximum sizes</b>	Positive pressure : 48" x 108" (1 219 mm x 2 743 mm). Neutral pressure : 48" x 120" (1 219 mm x 3 048 mm).
<b>Stiles</b>	<b>CE</b> (Compatible Edge): 7/16" (11 mm) wood (mill option). <b>ME</b> (Matching Edge): 7/16" (11 mm) hardwood. <b>BE</b> (Blind Edge): 7/16" (11 mm) hardwood. Laminated to 1" (25 mm) (FPCM)*. <b>PE</b> (Plastic Edge): HPDL edges. <b>FE</b> : Lambton Doors' <b>EDGEFENDER</b> : High impact resistant edges.
<b>Rails</b>	1-1/2" (38 mm) proprietary material (FPCM)*.
<b>Core</b>	Non-combustible mineral core bonded to the stiles and rails.
<b>Adhesive</b>	Type I (waterproof); PVA (UF-Free).
<b>Face</b>	Wood veneer, MDO or HPDL laminated to a HDF.
<b>Options</b>	Blocking for hardware.
<b>Lite and louver openings</b>	Cut-out for lite and louver with size limitations.
<b>Notes</b>	Stile and rail dimensions shown are rough sizes, before trimming. Dimensions will vary due to prefit requirements.
<b>Warranty</b>	Life of original installation.
<b>Factory finish</b>	UV Finishing System 9 by AWI. Stain, clearcoat, opaque and primed finish available. Custom color matching available. Sealed top and bottom standard. Lambton Doors' <b>ASEPTI</b> : Antimicrobial coated surface in option.
<b>Environmental Benefits</b>	Recycled content. All Series. FSC Certified Wood. Specify <b>FSC</b> . Low Emitting Materials <b>NAF</b> . Specify <b>NAF</b> . HPD - Health Product Declaration available.
<b>Door weight</b>	Thickness 1-3/4" (44mm) = 5,8 lb/ft <sup>2</sup> .

\* FPCM: Fire Proof Composite Material



The mark of responsible forestry

The FSC logo identifies products which contain wood from well-managed forests certified in accordance with the rules of the Forest Stewardship Council.

