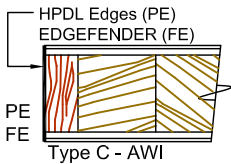
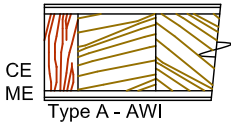
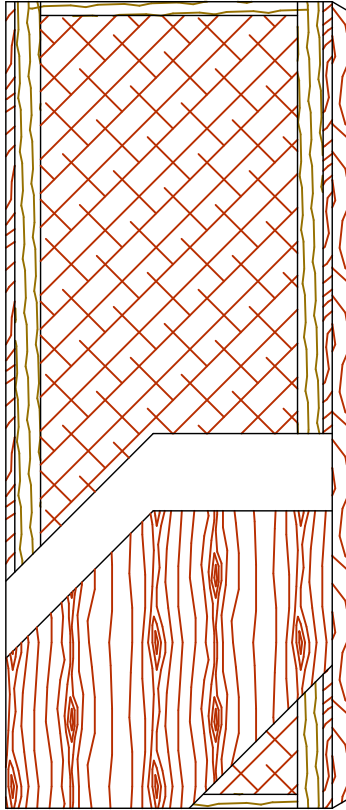


## Hollow core

Standard Series  
EnviroDesign™ Series

5-HC-CE/ME  
5-UFHC-ECE/EME



### SPECIFICATIONS DESCRIPTIONS

<b>Type</b>	Hollow core (interior use).
<b>In Conformity with Industry Standards</b>	ARCHITECTURAL WOODWORK STANDARDS-ED.2 WDMA Series I.S.1-A-2013 ASTM D5456-09
<b>Thicknesses</b>	1-3/8" (35 mm) – 1-3/4" (44 mm).
<b>Maximum Sizes</b>	48" x 108" (1 219 mm x 2 743 mm).
<b>Stiles</b>	<b>CE</b> (Compatible Edge): 7/16" (11 mm) wood (mill option). <b>ME</b> (Matching Edge): 7/16" (11 mm) hardwood. Laminated to 4" (102 mm) Structural Composite Lumber (SCL).
<b>Rails</b>	1-7/16" (36 mm) Structural Composite Lumber (SCL).
<b>Core</b>	Hollow core (mill option).
<b>Adhesive</b>	Type I (waterproof); PVA (UF-Free); VOC<0.683 g/L.
<b>Face</b>	Wood veneer, MDO or HPDL laminated to a HDF.
<b>Options</b>	UF-Free faces. <b>PE</b> (Plastic Edge); HPDL edges. Lambton Doors' <b>EDGEFENDER</b> : High impact resistant edges.
<b>Lite and Louver Openings</b>	Not available.
<b>Notes</b>	Stile and rail dimensions shown are rough sizes, before trimming.
<b>Warranty</b>	Life of original installation.
<b>Factory Finish</b>	UV Finishing System 9 by AWI. Stain, clearcoat, opaque and primed finish available. Custom color matching available. No VOC. Sealed top and bottom standard. Lambton Doors' <b>ASEPTI</b> : Antimicrobial coated surface in option.
<b>LEED® Credits</b>	<b>Mrc4.1, 4.2:</b> Recycled content. All Series. <b>IEQ 4.4:</b> Low Emitting Materials, UF-Free. Specify 5-UFPC.
<b>Door weight</b>	Thickness 1-3/4" (44mm) : 2.5 lbs/ft <sup>2</sup>

