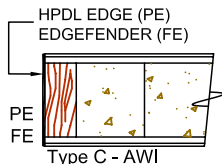
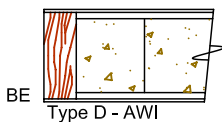
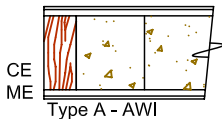
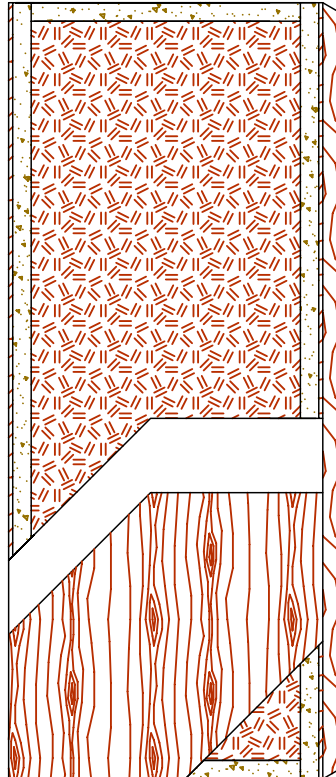


## COMMERCIAL AND ARCHITECTURAL DOORS

### Fire Door System Agrifiber Core Doors (AG) 60 minute

Standard Series **5-AG60-CE/ME/BE**  
EnviroDesign™ Series **5-UFAG60-ECE/EME/EBE**  
**5-FSAG60-ECE/EME/EBE**



### SPECIFICATIONS DESCRIPTIONS

<b>Type</b>	Agrifiber core (interior use).
<b>In conformity with industry standards</b>	ARCHITECTURAL WOODWORK STANDARDS-ED.2 WDMA SERIES I.S.1-A-2013 ASTM D5456-09
<b>Fire rating details</b>	60 minute neutral or positive pressure Refer to Fire-Rated Options of our Architectural Catalog (e-version) CAN/ULC-S104 NFPA 252 UL 10B neutral pressure UL 10C positive pressure category B UL 10C positive pressure category A in option
<b>Thicknesses</b>	1-3/4" (44 mm) to 2-1/4" (57 mm).
<b>Maximum sizes</b>	Single door : 48" x 96" (1 219 mm x 2438 mm) Pair doors: Pair not available. Refer to mineral core for double opening.
<b>Stiles</b>	<b>CE</b> (Compatible Edge): 7/16" (11 mm) wood (mill option). <b>ME</b> (Matching Edge): 7/16" (11 mm) hardwood. <b>BE</b> (Blind Edge): 7/16" (11 mm) hardwood. Laminated to 2" (50 mm) FPCM*. <b>PE</b> (Plastic Edge): HPDL edges. <b>FE</b> : Lambton Doors' <b>EDGEFENDER</b> : High impact resistant edges.
<b>Rails</b>	2" (50 mm) FPCM*.
<b>Core</b>	Agrifiber core with a density of 28-32 lb/ft <sup>3</sup> (449-513 kg/m <sup>3</sup> ) bonded to the stiles and rails. Rapidly renewable material, LD-1.
<b>Adhesive</b>	Type I (waterproof); PVA (UF-Free).
<b>Face</b>	Wood veneer, MDO or HPDL laminated to a HDF.
<b>Options</b>	Blocking for hardware.
<b>Lite and louver openings</b>	Not available.
<b>Notes</b>	Stile and rail dimensions shown are rough sizes, before trimming.
<b>Warranty</b>	Life of original installation.
<b>Factory finish</b>	UV Finishing System 9 by AWI. Stain, clearcoat, opaque and primed finish available. Custom color matching available. Sealed top and bottom standard. Lambton Doors' <b>ASEPTI</b> : Antimicrobial coated surface in option.
<b>Environmental Benefits</b>	Recycled content. All Series. Rapidly renewable material. All Series. FSC Certified Wood. Specify <b>5-FSAG60</b> . Low Emitting Materials, NAF. Specify <b>5-UFAG60</b> .
<b>Door weight</b>	Thickness 1-3/4" (44mm) = 5.3 lb/ft <sup>2</sup> .

\* FPCM: Fire Proof Composite Material



La marque de la  
gestion forestière  
responsable



The FSC® logo identifies products which contain wood from well-managed forests certified in accordance with the rules of the Forest Stewardship Council®.  
Ask for our FSC® certified products.