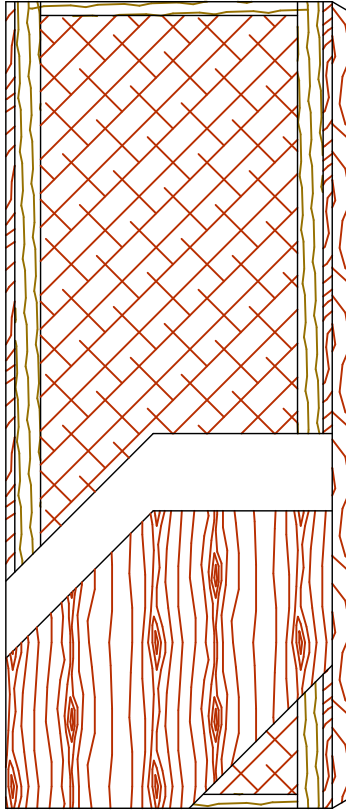


Hollow core

Standard Series
EnviroDesign™ Series

5-HC-CE/ME
5-UFHC-ECE/EME



SPECIFICATIONS DESCRIPTIONS

Type	Hollow core (interior use).
In Conformity with Industry Standards	ARCHITECTURAL WOODWORK STANDARDS-ED.2 WDMA Series I.S.1-A-2013 ASTM D5456-09
Thicknesses	1-3/8" (35 mm) – 1-3/4" (44 mm).
Maximum Sizes	48" x 108" (1 219 mm x 2 743 mm).
Stiles	CE (Compatible Edge): 7/16" (11 mm) wood (mill option). ME (Matching Edge): 7/16" (11 mm) hardwood. Laminated to 4" (102 mm) Structural Composite Lumber (SCL).
Rails	1-7/16" (36 mm) Structural Composite Lumber (SCL).
Core	Hollow core (mill option).
Adhesive	Type I (waterproof); PVA (UF-Free); VOC<0.683 g/L.
Face	Wood veneer, MDO or HPDL laminated to a HDF.
Options	UF-Free faces. PE (Plastic Edge): HPDL edges. Lambton Doors' EDGEFENDER : High impact resistant edges.
Lite and Louver Openings	Not available.
Notes	Stile and rail dimensions shown are rough sizes, before trimming.
Warranty	Life of original installation.
Factory Finish	UV Finishing System 9 by AWI. Stain, clearcoat, opaque and primed finish available. Custom color matching available. No VOC. Sealed top and bottom standard. Lambton Doors' ASEPTI : Antimicrobial coated surface in option.
LEED® Credits	Mrc4.1, 4.2: Recycled content. All Series. IEQ 4.4: Low Emitting Materials, UF-Free. Specify 5-UFPC.
Door weight	Thickness 1-3/4" (44mm) : 2.5 lbs/ft ²

