

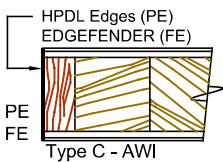
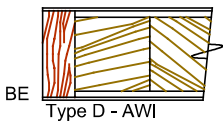
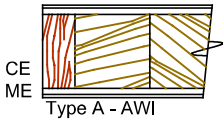
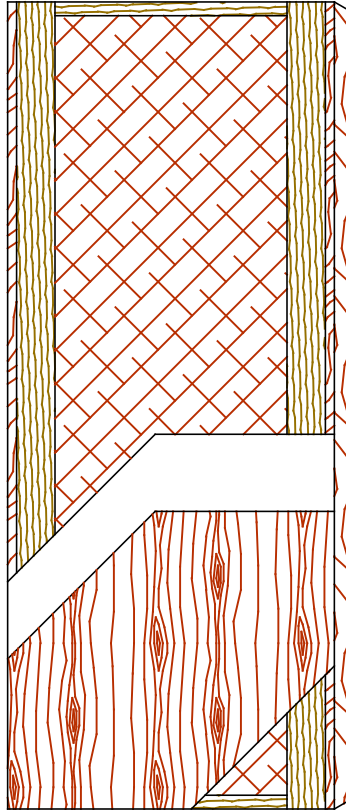
Hollow Core Door (HC)

Standard Series

5-HC-CE/ME/BE

EnviroDesign™ Series

5-UFHC-ECE/EME/EBE



SPECIFICATIONS DESCRIPTIONS

| | |
|--|--|
| Type | Hollow Core (HC) (interior use). |
| In Conformity with Industry Standards | ARCHITECTURAL WOODWORK STANDARDS-ED.2 NAAWS 4.0 WDMA Series I.S.1-A-2021 ASTM D5456-09 |
| Thicknesses | 1-3/8" (35 mm) - 1-3/4" (44 mm). |
| Maximum Sizes | 48" x 108" (1 219 mm x 2 743 mm). |
| Stiles | CE (Compatible Edge): 7/16" (11 mm) wood (mill option). ME (Matching Edge): 7/16" (11 mm) hardwood. BE (Blind Edge): 7/16" (11 mm) hardwood. Laminated to 4" (102 mm) Structural Composite Lumber (SCL). PE (Plastic Edge): HPDL edges. FE : Lambton Doors' EDGEFENDER : High impact resistant edges. |
| Rails | 1 -7/16" (36 mm) Structural Composite Lumber (SCL). |
| Core | Hollow core (mill option). |
| Adhesive | Type I (waterproof); PVA (UF-Free). |
| Face | Wood veneer, MDO or HPDL laminated to a HDF. |
| Options | 15/16" (24 mm) wood (mill option) or hardwood laminated to 4" (102 mm) Structural Composite Lumber (SCL). |
| Lite and Louver Openings | Not available. |
| Notes | Stile and rail dimensions shown are rough sizes, before trimming. |
| Warranty | Life of original installation. |
| Factory Finish | UV Finishing System 9 by AWI. No VOC. Stain, clearcoat and primed finish available. Sealed top and bottom standard. Custom color matching available. Lambton Doors' ASEPTI : Antimicrobial coated surface in option. |
| Environmental Benefits | Recycled content. All Series. Regional Materials. According to job site location. Low Emitting Materials, NAF-ULEF. Specify 5-UFHC. |
| Door Weight | Thickness 1-3/4" (44mm) : 2,5 lbs/ft ² . |

Environmental Benefits



The mark of responsible forestry

The FSC® logo identifies products which contain wood from well-managed forests certified in accordance with the rules of the Forest Stewardship Council®.