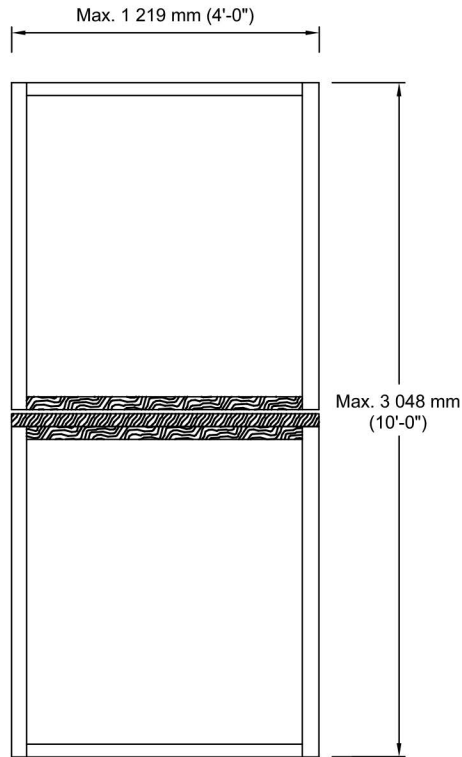


NON RATED DUTCH DOOR



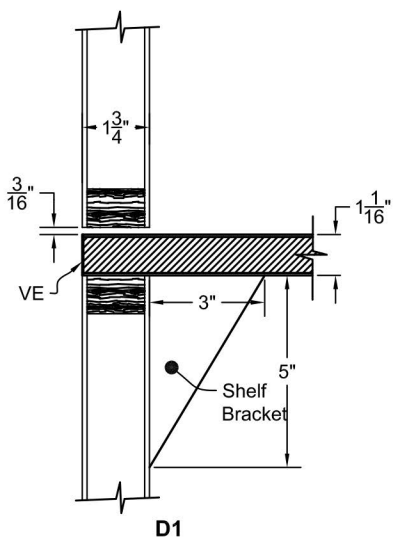
DOOR INFORMATION

- Door construction according to series except for meeting rails.⁽¹⁾
- The maximum single opening size is 4'-0" x 10'-0" [1219 mm x 3048 mm].
- The maximum pair opening size is 8'-0" x 10'-0" [2438 mm x 3048 mm].

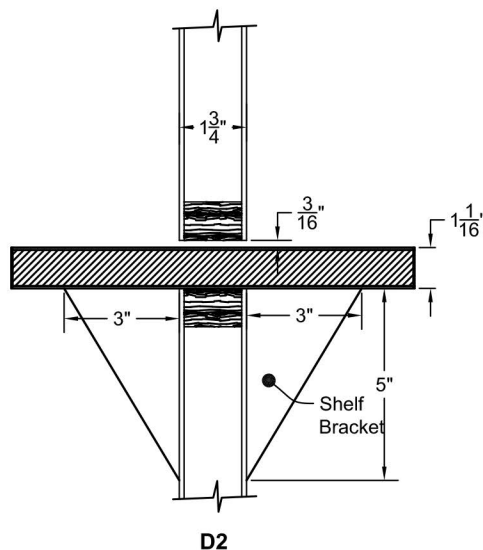
Make certain that thickness of shelf is taken into consideration when specifying hardware location.

(1) DUTCH DETAILS AFTER TRIM

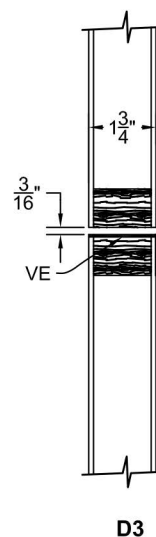
**SHELF APPLIED
TO TOP (1 side)**



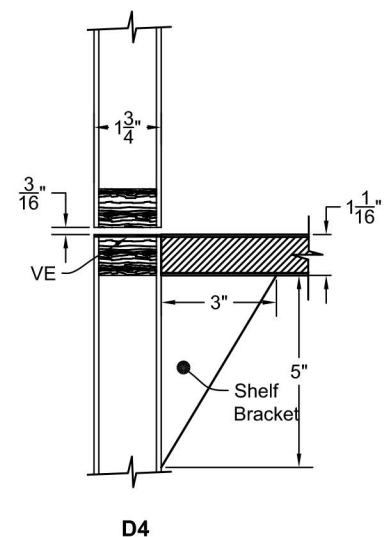
**SHELF APPLIED
TO TOP (2 sides)**



NO SHELF



**SHELF APPLIED
TO DOOR FACE**

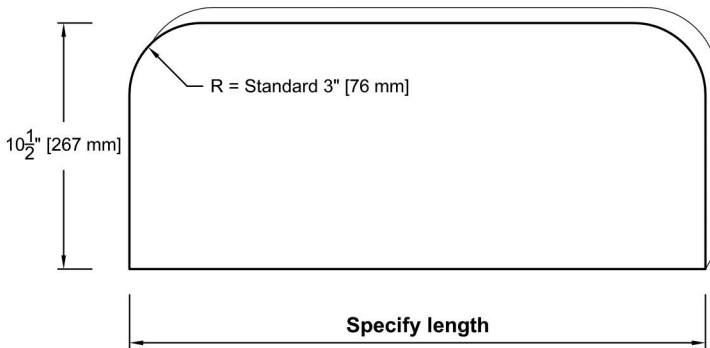


STANDARD SHELF DETAILS WITH MACHINING

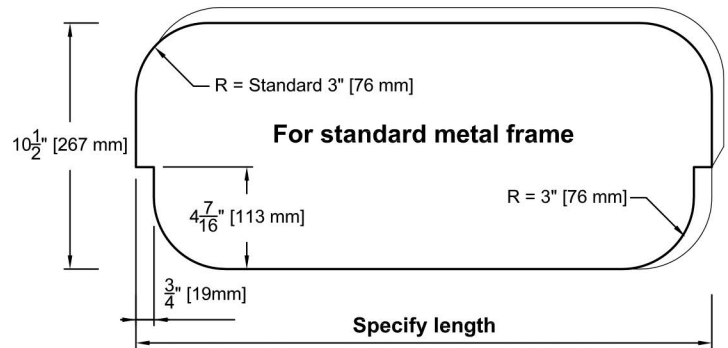
SH-1



SH-2



SH-3



FOR OTHERS DETAILS, CALL CUSTOMER SERVICE.

- Standard shelf size : 1-1/16" (27 mm) x 5" (127 mm) or 1-1/16" (27 mm) x 10 1/2" (267 mm).
- Two shelf brackets included.

