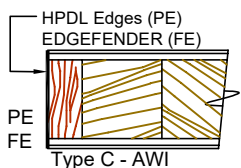
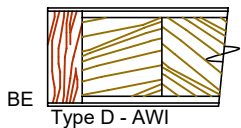
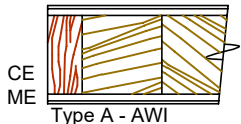
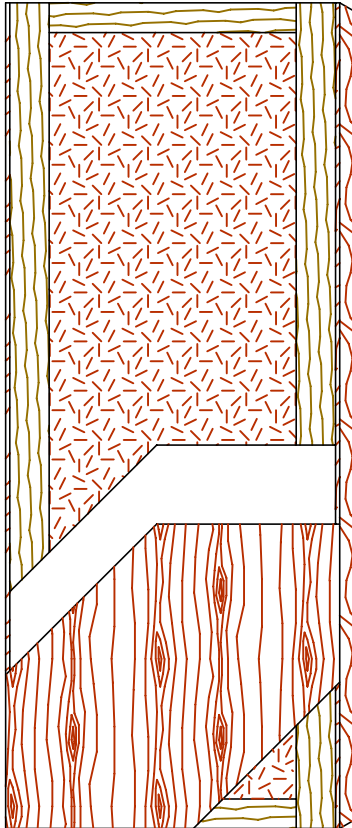


Can. : 1 800 463.3124  
U.S.A. : 1 800 363.2248  
info@lambtondoors.com  
www.lambtondoors.com

# COMMERCIAL AND ARCHITECTURAL DOORS

## Particleboard Core Door (PC)

Standard Series **5-8300-CE/ME/BE**  
EnviroDesign™ Series **5-UF8300-ECE/EME/EBE**  
**5-FS8300-ECE/EME/EBE**



The FSC® logo identifies products which contain wood from well-managed forests certified in accordance with the rules of the Forest Stewardship Council®.

### SPECIFICATIONS DESCRIPTIONS

<b>Type</b>	Particleboard core (interior use).
<b>In Conformity with Industry Standards</b>	ARCHITECTURAL WOODWORK STANDARDS-ED.2 NAAWS 4.0 WDMA Series I.S.1-A-2021 ASTM D5456-09 ANSI A208.1 - 2016
<b>Fire Rating Details</b>	20 minutes neutral or positive pressure Refer to Fire-Rated Options of our Architectural Catalog (e-version) CAN/ULC-S104 NFPA 252 UL 10B neutral pressure UL 10C positive pressure category B UL 10C positive pressure category A in option
<b>Thicknesses</b>	Non-Rated: 1-3/8" (35 mm). 20 Minutes: 1-3/4" (44 mm) to 2-1/4" (57 mm).
<b>Maximum Sizes</b>	Non-Rated: 48" x 120" (1 219 mm x 3 048 mm). Neutral and Positive Pressure : 48" x 108" (1 219 mm x 2 743 mm).
<b>Stiles</b>	<b>CE</b> (Compatible Edge): 7/16" (11 mm) wood (mill option). <b>ME</b> (Matching Edge): 7/16" (11 mm) hardwood. <b>BE</b> (Blind Edge): 7/16" (11 mm) hardwood. Laminated to 4" (102 mm) Structural Composite Lumber (SCL). <b>PE</b> (Plastic Edge): HPDL edges. <b>FE</b> : Lambton Doors' <b>EDGEFENDER</b> : High impact resistant edges.
<b>Rails</b>	3" (76 mm) Structural Composite Lumber (SCL).
<b>Core</b>	Particleboard core with a density of 28-32 PCF (449-513 kg/m³) LD-1 bonded to the stiles and rails.
<b>Adhesive</b>	Type I (waterproof); PVA (UF-Free).
<b>Face</b>	Wood veneer, MDO or HPDL laminated to a HDF.
<b>Options</b>	LD-2 core, FSC and ULEF. 15/16" (24 mm) wood (mill option) or hardwood laminated to 4" (102 mm) Structural Composite Lumber (SCL).
<b>Lite and Louver Openings</b>	Wood louvers not permitted in 20 minutes labeled doors. Cut-out must not exceed 40% of door area (LD-1). All models: Minimum 5" (127 mm) from stiles or rails. Non-Rated: Minimum 1-1/2" (38 mm) from cut-out to cut-out. 20 Minutes: Minimum 2-3/4" (70 mm) from cut-out to cut-out.
<b>Notes</b>	Stile and rail dimensions shown are rough sizes, before trimming.
<b>Warranty</b>	Life of original installation.
<b>Factory Finish</b>	UV Finishing System 9 by AWI. Stain, clearcoat, opaque and primed finish available. Custom color matching available. Sealed top and bottom standard. Lambton Doors' <b>ASEPTI</b> : Antimicrobial coated surface in option.
<b>Environmental Benefits</b>	Recycled content. All Series. Regional Materials. According to job site location. FSC Certified Wood. Specify 5-FS8300. Low Emitting Materials, NAF-ULEF. Specify 5-UF8300. EPD - Environmental Product Declaration available. HPD - Health Product Declaration available.
<b>Door weight</b>	Thickness 1-3/4" (44mm) : LD-1= 5,4 lbs/ft² LD-2= 5,7 lbs/ft²