

Lead Lined Door (LSL)

Standard Series

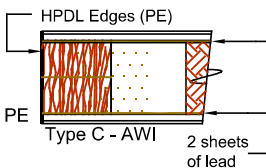
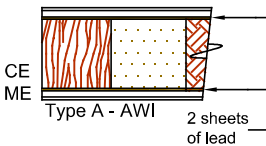
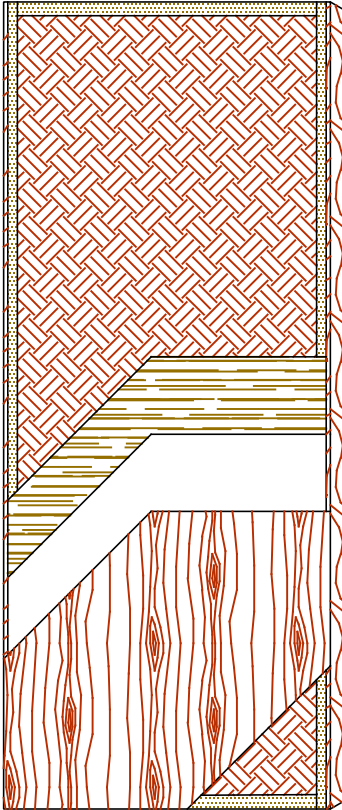
EnviroDesign™ Series



5-LSL-LL-CE/ME

5-UFLSL-LL-ECE/EME

5-FSLSL-LL-ECE/EME



SPECIFICATIONS DESCRIPTIONS

Type	Laminated Strand Lumber core (LSL) (interior use).
In Conformity with Industry Standards	ARCHITECTURAL WOODWORK STANDARDS-ED.2 NAAWS 4.0 WDMA Series I.S.1-A-2021 ASTM D5456-09, ASTM F476 ANSI A208.1 - 2016 CSA 0132.2 SERIES 90
Fire Rating Details	20 minutes neutral or positive pressure. Refer to Fire-Rated Options of our Architectural Catalog (e-version). CAN/ULC-S104 NFPA 252 UL 10B neutral pressure UL 10C positive pressure category B UL 10C positive pressure category A in option
Thicknesses	1-3/4" (44 mm).
Maximum Sizes	48" x 96" (1 219 mm x 2 438 mm).
Stiles	CE (Compatible Edge): 15/16" (24 mm) wood (mill option). ME (Matching Edge): 15/16" (24 mm) hardwood. Laminated to 1" (25 mm) Structural Composite Lumber (SCL). PE (Plastic Edge): HPDL edges.
Rails	1 -7/16" (36 mm) Structural Composite Lumber (SCL).
Core	Structural composite lumber (SCL) with a density of 38 PCF (609 kg/m ³) bonded to the stiles and rails.
Adhesive	Type I (waterproof); PVA (UF-Free).
Face	Wood veneer, MDO or HPDL laminated to a HDF.
Options	Lead thickness available : 1/16", 1/8" or 1/4" total.
Lite and Louver Openings	Wood louvers not permitted. Lite opening maximum 1 296 in ² (0.836m ²). Non-Rated : Wood beads or lite kit model #115-L2 Rated : Metal kit model #115-L1
Notes	<ul style="list-style-type: none"> • Stile and rail dimensions shown are rough sizes, before trimming. • Available only with 2 sheets of lead : 2 x 1/32" (0.79 mm) = 1/16" (1.59 mm) total. 2 x 1/16" (1.59 mm) = 1/8" (3.175 mm) total. 2 x 1/8" (3.175 mm) = 1/4" (6.35 mm) total. • Lambton Doors recommends the use of heavy duty hinges.
Warranty	Life of original installation.
Factory Finish	UV Finishing System 9 by AWI. No VOC. Stain, clearcoat, opaque and primed finish available. Sealed top and bottom standard. Custom color matching available. Lambton Doors' ASEPTI : Antimicrobial coated surface in option.
Environmental Benefits	Recycled content. All Series. Regional Materials. According to job site location. FSC Certified Wood. Specify 5-FSLSL. Low Emitting Materials, NAF-ULEF. Specify 5-UFLSL. EPD - Environmental Product Declaration available. HPD - Health Product Declaration available.
Door Weight	Thickness 1-3/4" (44mm) : 9.5 to 20.5 lbs/ft ² . Will vary depending on the lead thickness



The FSC® logo identifies products which contain wood from well-managed forests certified in accordance with the rules of the Forest Stewardship Council®.