



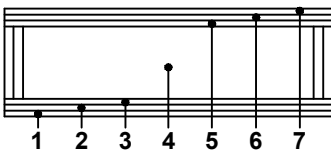
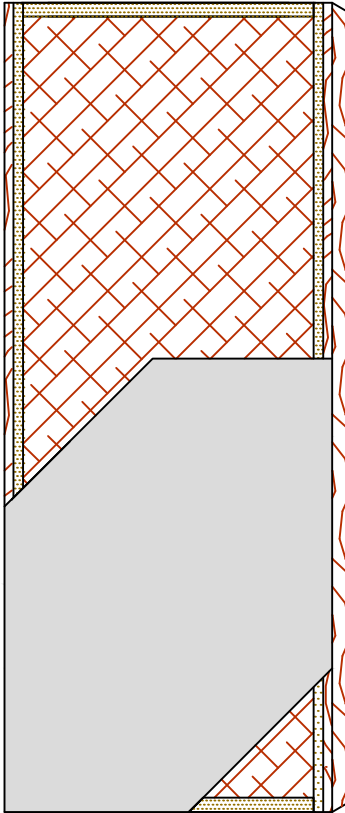
COMMERCIAL AND ARCHITECTURAL
DOOR MANUFACTURER

U.S.A. : 1 800 363.2248
Can. : 1 800 463.3124
info@lambtondoors.com

COMMERCIAL AND ARCHITECTURAL DOORS

Hollow core

Compatible edge 7-HC-CE



SPECIFICATIONS DESCRIPTION

Type	Hollow core (interior use).
In conformity with industry standards	ARCHITECTURAL WOODWORK STANDARDS-ED.1 W.D.M.A. SERIES I.S.1-A-2004 ASTM D5456-09
Thickness	1-3/8" (35 mm) – 1-3/4" (44 mm).
Maximum size	48" x 108" (1 219 mm x 2 743 mm).
Stiles	15/16" (24 mm) wood (mill option) laminated to 1" (25 mm) structural composite lumber (SCL).
Rails	1-7/16" (36 mm) structural composite lumber (SCL).
Core	Hollow core (mill option).
Adhesive	Type I (waterproof); PVA (no urea formaldehyde); VOC<0.683 g/L.
Face	Hardboard.
Options	<ul style="list-style-type: none"> ● 4" (102 mm) stiles blocking on lock side. (Blocking material is mill option). ● Bifold.
Lite and louver openings	Not available.
Notes	Stile and rail dimensions shown are rough sizes, before trimming. Dimensions will vary due to prefit requirements.
Warranty	Life of original installation. See our complete warranty for details.
Factory Finish	UV Finishing System. White primer available. Seal top and bottom standard. No VOC.
Environmental Description	Recycled content (LEED MRc4.1, 4.2). 

INFORMATION www.lambtondoors.com

