



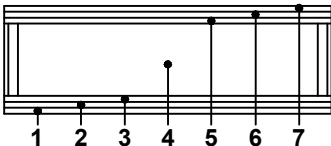
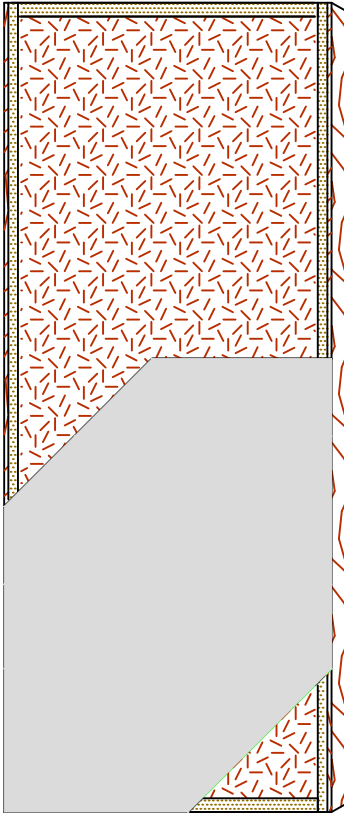
COMMERCIAL AND ARCHITECTURAL
DOOR MANUFACTURER

U.S.A. : 1 800 363.2248
Can. : 1 800 463.3124
info@lambtondoors.com

COMMERCIAL AND ARCHITECTURAL DOORS

Particleboard Core

Compatible edge **7-PC-CE**



SPECIFICATIONS DESCRIPTION

Type	Particleboard core (interior use).
In conformity with industry standards	ARCHITECTURAL WOODWORK STANDARDS-ED.1 W.D.M.A. SERIES I.S.1-A-2004 ASTM D5456-09 ANSI A208.1
Thickness	1-3/8" (35 mm) – 1-3/4" (44 mm). 2" (51 mm) – 2-1/4" (57 mm).
Maximum size	48" x 120" (1 219 mm x 3 048 mm).
Stiles	7/16" (11 mm) wood (mill option) laminated to 1" (25 mm) structural composite lumber (SCL).
Rails	1-7/16" (37 mm) structural composite lumber (SCL).
Core	Particleboard core with a density of 28-32 PCF (449-513 kg/m ³) LD-1, bonded to the stiles and rails.
Adhesive	Type I (waterproof); PVA (no urea formaldehyde); VOC<0.683 g/L.
Face	Hardboard.
Options	<ul style="list-style-type: none"> ●LD-2 core. ●[Door 1-3/4"- (44 mm)] 20 minute rating neutral or positive pressure. Refer to Fire Door Section of our website for details. ●15/16" (24 mm) wood (mill option) laminated to 1" (25 mm) structural composite lumber (SCL). ●Bifold.
Lite and louver openings	Wood louvers not permitted in 20 minute labeled doors. Cut-out must not exceed 40% of door area. Minimum 5" (127 mm) from stiles or rails. Minimum 1-1/2" (38 mm) from cut-out to cut-out. Refer to Option Section of our website for details.

Notes Stile and rail dimensions shown are rough sizes, before trimming. Dimensions will vary due to prefit requirements.

Warranty Life of original installation.
See our complete warranty for details.

Factory Finish UV Finishing System. White primer available.
Seal top and bottom standard. **No VOC.**

Environmental Description Recycled content (**LEED MRc4.1, 4.2**).



INFORMATION www.lambtondoors.com

