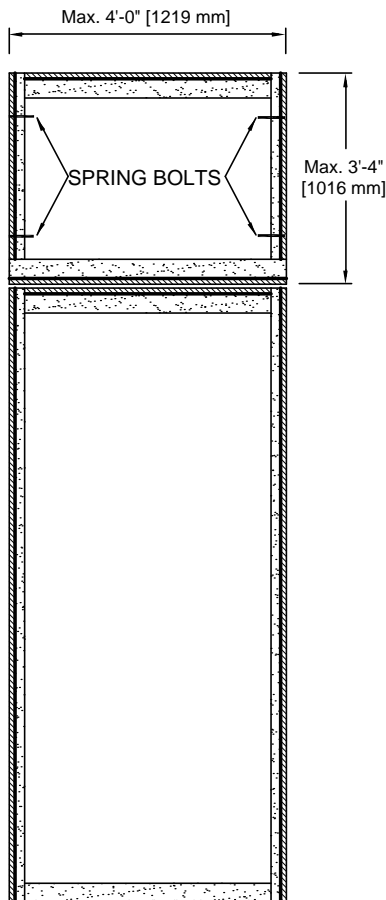




U.S.A. : 1.800.363.2248
 Can. : 1.800.463.3124

FIRE DOOR SYSTEM POSITIVE PRESSURE (Category A)

45/60/90 MINUTE DOOR WITH TRANSOM TRANSOM BAR ONLY



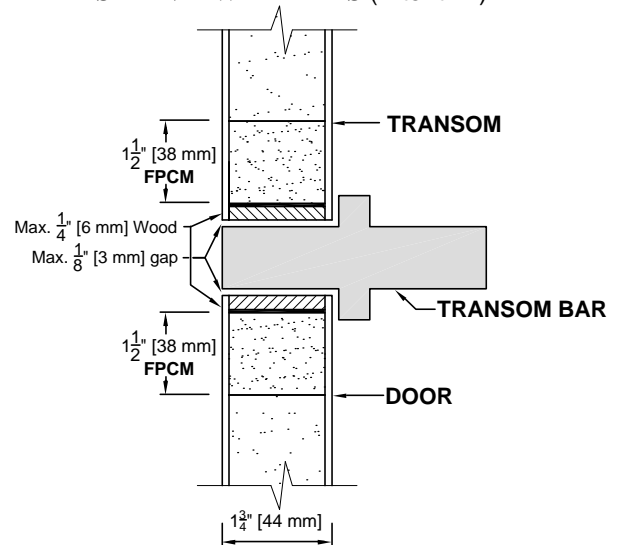
- Door construction according to series except for meeting rails.
- The maximum opening size is :
 - **45 minutes** 4'-0" x 9'-0" [1219 mm x 2743 mm].
 - **60/90 minutes** 4'-0" x 8'-0" [1219 mm x 2438 mm].
- The maximum transom size is 4'-0" x 3'-4" [1219 mm x 1016 mm].
- The panel shall be machined for spring bolts.
 The appropriate amount of spring bolts will be provided with the panel.

APPROVED STEEL SPRING BOLTS : "STANLEY #1697"

Panel up to 18" [457 mm] in height = 2 spring bolts per side.
 Panel up to 36" [914 mm] in height = 3 spring bolts per side.
 Panel up to 40" [1016 mm] in height = 4 spring bolts per side.

(All inner stiles and rails are a FPCM)

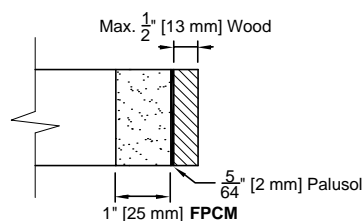
SIDE VIEW DETAILS (After trim)



Code : P45-F17
 P60/90-F17

TRANSOM DETAILS (Before trim)

STILES



**TOP & BOTTOM RAILS +
 TOP RAIL OF DOOR**

