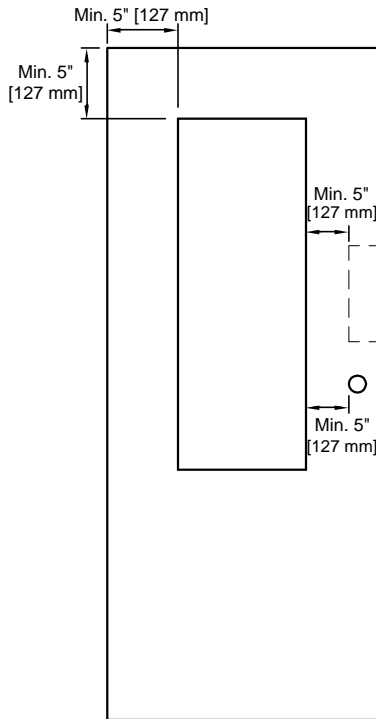


LITE CUT OUT POSITIVE PRESSURE

20 MINUTE



DOOR INFO

- Max. door size 4'-0" x 9'-0" [1219 mm x 2743 mm].
- Lite cut out to edge of door min. 5" [127 mm].
- Lite cut out to lite cut out min. 5" [127 mm].
- Lite cut out to hardware cut out min. 5" [127 mm].
- Lite cut out to bottom of door :
 - Up to 7'-0" [2134 mm] = 10" [254 mm].
 - Over 7'-0" [2134 mm] = 12" [305 mm].

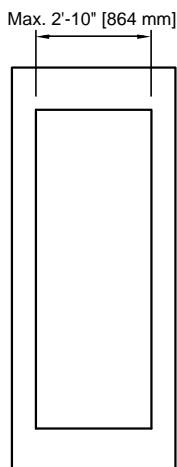
LITE INFO

● USING LB7-20 BEADS

- Max. size 1296 sq. in. using Firelite.
- Max. size 1296 sq. in. using 1/4" [6 mm] Wire glass.
- Multiple lites available if total does not exceed above mentioned dimensions.

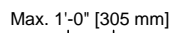
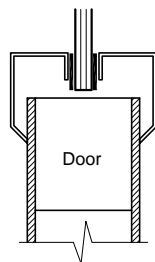
● USING METAL LITE KIT #115

- Max. size 2856 sq. in. using Firelite & Silicon caulk.
- Max. size 2856 sq. in. using 1/4" [6 mm] Wire glass & Pemko FG 3000S45.
- Max. size 1296 sq. in. using 1/4" [6 mm] Wire glass or Firelite only.



The maximum visible glass area allowed is 2'-10" wide x 7'-0" high or 2856 sq. inches.

Apply FG3000S45 to frame lip as shown



Doors multiple Vision Lites are allowed, but the combined total visible glass area allowed is 2856 sq. in. per door.

