

WHITE *Maple*

16

The beauty and character of wood

It is as difficult to adequately describe the natural beauty and character of wood as it is to describe an original painting in oil. In fact, this is more than a passing comparison. A tree and a painting are both originals, and each is the only one of its kind.



01/2010

VENEER SUMMARY TABLE

QUARTER CUT

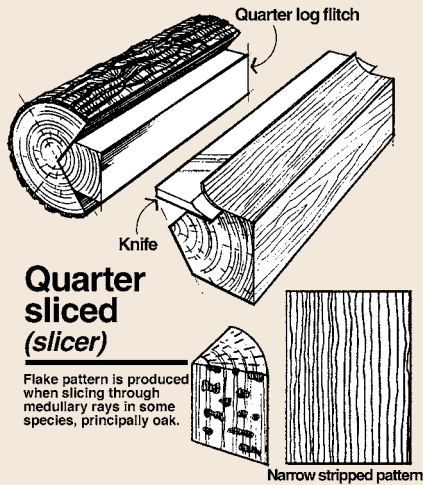
A series of stripes is produced. These stripes vary in width from species to species. A natural distribution of ray fleck (flake) is a characteristic of this cut in red and white oak.

Species	Maple
Cut	Quarter Cut
Grade description	A
COLOR AND MATCHING	White
Sapwood	Yes
Heartwood	No
Color streaks or spots	Slight
Color variation	Slight
Sharp color contrasts at joints	Yes
TYPE OF MATCHING	
Book matched	Specify
Continuous matched (transom)	Specify
Slip matched	Yes
Random matched	Specify
Nominal minimum width of face components	Quarter Cut 3" (76 mm)
NATURAL CHARACTERISTICS	
Small conspicuous burls and pin knots – Combined average number	1 per 2.69 sq. ft. (0.25 sq. m)
Conspicuous burls – Maximum size	3/8" (9.5 mm)
Conspicuous pin knots – Average number	1 per 8 sq. ft. (0.74 sq. m)
– Maximum size: dark part	1/8" (3 mm)
– Maximum size: total	1/4" (6 mm)
Scattered sound and repaired knots – Combined average number	No
– Maximum size – Sound	No
– Maximum size – Repaired	No
– Average number – Repaired	No
Mineral streaks	Slight
Bark pockets	No
Worm tracks	Slight
Vine marks	Slight
Cross bars	Slight
MANUFACTURING CHARACTERISTICS	
Rough cut	No
Blended repaired tapering hairline splits	Two 1/16" x 6" (1.6 mm x 152 mm)
Repairs	Small blending

ADAPTED FROM
HPVA LATEST EDITION.

Quarter cut

Slip and running match



MATCHING BETWEEN INDIVIDUAL PIECES OF VENEER

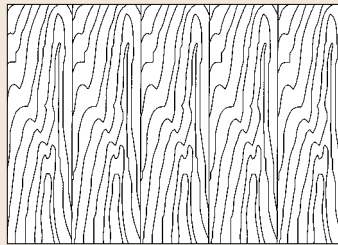
Leaf matching

The way in which the individual cuts are placed next to each other during the fabrication of the veneer face is the next factor affecting the appearance of the doors. The type of match at the joint line must be specified.

Natural variations in the leaves and the progression of the grain pattern across the face are the hallmarks of real wood doors.

SLIP MATCH

Adjoining pieces of veneer are placed in sequence without turning over every other piece. The grain figure repeats, but joints won't show mirrored effect. Slip matching is often used in quarter cut, rift cut and comb grain veneers to minimize the barber pole effect.



ASSEMBLY OF SPLICED VENEER ON A FACE

The type of "assembly match" must be specified to obtain a desired appearance. Any sequence matching from opening to opening must be specified.

RUNNING MATCH

Non-symmetrical appearance in any single door face. Veneer pieces of unequal width. Each face is assembled from as many veneer pieces as necessary.

