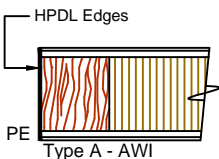
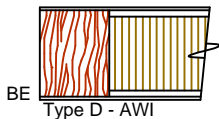
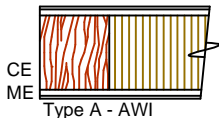
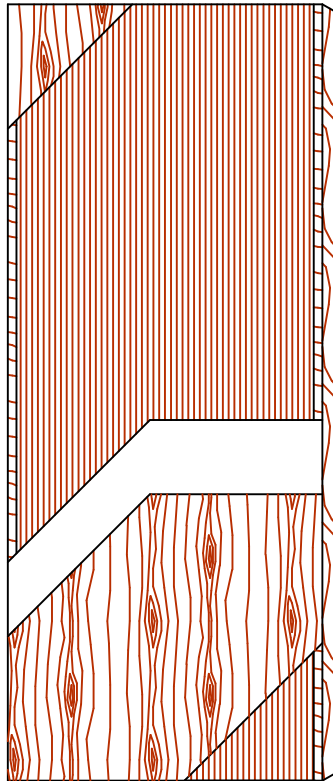




COMMERCIAL AND ARCHITECTURAL  
DOOR MANUFACTURER

U.S.A. : 1 800 363.2248  
Can. : 1 800 463.3124  
info@lambtondoors.com  
www.lambtondoors.com



The FSC logo identifies products which contain wood from well-managed forests certified in accordance with the rules of the Forest Stewardship Council.



# COMMERCIAL AND ARCHITECTURAL DOORS

## Laminated Veneer Lumber Core (LVL)

Standard Series  
EnviroDesign™ Series



5-LVL-CE/ME/BE  
5-UFLVL-ECE/EME/EBE  
5-FSLVL-ECE/EME/EBE

### SPECIFICATIONS DESCRIPTIONS

<b>Type</b>	Laminated Veneer Lumber Core (interior use).
<b>In Conformity with Industry Standards</b>	ARCHITECTURAL WOODWORK STANDARDS-ED. 2 W.D.M.A. SERIES I.S.1-A-2013 CSA 0132.2 SERIES 90 ASTM D5456-09
<b>Thicknesses</b>	1-3/4" (44 mm).
<b>Maximum Sizes</b>	48" x 120" (1 219 mm x 3 048 mm).
<b>Stiles</b>	<b>CE</b> (Compatible Edge): 15/16" (24 mm) wood (mill option). <b>ME</b> (Matching Edge): 15/16" (24 mm) hardwood. <b>BE</b> (Blind Edge): 15/16" (24 mm) hardwood.
<b>Core</b>	Piece of laminated wood veneer strips of 1/8" (3 mm) each. These strips are longitudinally laminated by hot pressing (LVL).
<b>Adhesive</b>	Type I (waterproof); PVA (UF-Free); VOC<0.683 g/L.
<b>Face</b>	Wood veneer, MDO or HPDL laminated to a HDF.
<b>Options</b>	UF-Free faces. <b>PE</b> (Plastic Edge): HPDL edges. Lambton Doors' <b>EDGEFENDER</b> : High impact resistant edges.
<b>Lite and Louver Openings</b>	Minimum 5" (127 mm) from stiles or rails. Minimum 1-1/2" (38 mm) from cut-out to cut-out.
<b>Notes</b>	Stile and rail dimensions shown are rough sizes, before trimming.
<b>Warranty</b>	Life of original installation.
<b>Factory Finish</b>	UV Finishing System 9 by AWI. Stain, clearcoat, opaque and primed finish available. Custom color matching available. No VOC. Sealed top and bottom standard. Lambton Doors' <b>ASEPTI</b> : Antimicrobial coated surface in option.
<b>LEED® Credits</b>	<b>Mrc4.1</b> : Recycled content. All Series. <b>Mrc5</b> : Regional Materials. According to job site location. <b>Mrc7</b> : FSC Certified Wood. Specify 5-FSLVL. <b>IEQ 4.4</b> : Low Emitting Materials, UF-Free. Specify 5-UFLVL.



Printed in Canada 2015/12